

## ProDictate mobile User Guide

Version : 1.8.964  
Date : 2011.04.05

Brainworks GmbH  
Workflow Solutions  
Uhlandstrasse 28  
D-10719 Berlin

Internet: [www.mybrainworks.eu](http://www.mybrainworks.eu)  
E-Mail: [info@mybrainworks.eu](mailto:info@mybrainworks.eu)



**Note:**

Please note, that due to warranty issues, installation and maintenance of Brainworks product systems are to be performed by specially trained service personnel only.

The Brainworks team makes quite an effort to supply its customers with electronic documentations for all Brainworks products. If you have remarks or suggestions concerning our product documentation, please send us an email: [info@mybrainworks.eu](mailto:info@mybrainworks.eu)

Installation Instruction for ProDictate mobile  
Version: December 2010

Brainworks GmbH  
Uhlandstrasse 28  
10719 Berlin  
[www.mybrainworks.eu](http://www.mybrainworks.eu)

All rights reserved. Copying, reproducing and distributing the software and this manual without written consent of the Brainworks GmbH are prohibited.

## Trademarks

Microsoft, Windows, XP, Vista, Windows 2000 Server, Windows 2003 Server, SQL2000, SQL2005 Express, Internet Explorer, .NET Framework 1.1/2.0 und DirectX 9.0c are registered trademarks or trademarks of the Microsoft Corporation in the USA and in other countries.

Citrix<sup>®</sup> is registered trademarks or trademarks of Citrix<sup>®</sup> Systems, Inc. in the USA and in other countries.

BlackBerry<sup>®</sup> is registered trademarks or trademarks of RIM, Inc. in the Canada and in other countries.

Dragon NaturallySpeaking<sup>®</sup> is registered trademarks or trademarks of Nuance Communications, in the USA and in other countries.

## LIMITED WARRANTY - LIMITATION OF LIABILITY

PLEASE READ AND ACCEPT THE END USER LICENSE AGREEMENT WHICH IS DELIVERED WITH THE PRODUCT BEFORE YOU USE THE RESPECTIVE SOFTWARE. BY USING AN ARBITRARY PART OF THE SOFTWARE, YOU ACCEPT THE CONDITIONS OF THE END USER LICENSE AGREEMENT.

EXCEPT AS PROVIDED IN THE DISCLAIMER OF WARRANTY, PROPLAYER IS PROVIDED TO THE LICENSEE ON AN "AS IS" BASIS, AND BRAINWORKS GMBH MAKES NO OTHER WARRANTY OF ANY KIND, EXPRESS OR IMPLIED, WITH REGARD TO PROPLAYER. IN NO EVENT SHALL BRAINWORKS GMBH BE LIABLE TO THE LICENSEE FOR ANY SPECIAL, CONSEQUENTIAL, INCIDENTAL OR INDIRECT DAMAGES OF ANY KIND, INCLUDING WITHOUT LIMITATION LOSS OF PROFITS OR DATA AND PERSONAL INJURY ARISING OUT OF OR IN CONNECTION WITH THE INSTALLATION, USE AND PERFORMANCE OF PROPLAYER, WHETHER ALONE OR IN COMBINATION WITH ANY OTHER PRODUCT OR SERVICE. IT IS THE RESPONSIBILITY OF THE LICENSEE TO MAKE BACKUPS AND TAKE OTHER NECESSARY SECURITY MEASURES BEFORE INSTALLING PROPLAYER IN ORDER TO PREVENT POSSIBLE DAMAGE. IN NO EVENT WILL BRAINWORKS GMBH BE LIABLE FOR ANY CLAIM AGAINST THE LICENSEE BY A THIRD PARTY AND THE LICENSEE HEREBY AGREES TO INDEMNIFY AND HOLD BRAINWORKS GMBH HARMLESS FOR ANY CLAIMS FOR COST, DAMAGE, EXPENSE OR LIABILITY ARISING OUT OF OR IN CONNECTION WITH THE INSTALLATION, USE AND PERFORMANCE OF PROPLAYER, WHETHER ALONE OR IN COMBINATION WITH ANY OTHER PRODUCT OR SERVICE.

ALL INFORMATION CONTAINED IN THIS DOCUMENT MAY BE CHANGED BY BRAINWORKS GMBH WITHOUT FURTHER NOTIFICATION. EXCEPT A PRINTED COPY FOR PERSONAL USE, NO PART OF THIS DOCUMENT MAY BE REPRODUCED OR TRANSFERRED ELECTRONICALLY, MECHANICALLY OR IN ANY OTHER WAY FOR ANY PURPOSE WITHOUT WRITTEN AGREEMENT OF THE BRAINWORKS GMBH.

Copyright <sup>®</sup> 2008 Brainworks GmbH. All rights reserved.

## Table of Contents

<b>LIMITED WARRANTY - LIMITATION OF LIABILITY .....</b>	<b>3</b>
<b>INTRODUCTION.....</b>	<b>5</b>
<b>OVERVIEW .....</b>	<b>5</b>
<b>1. HOW TO GET A LICENSE .....</b>	<b>6</b>
<b>2. REQUIREMENTS .....</b>	<b>6</b>
<b>3. PRODICTATE MOBILE-INSTALLATION OTA.....</b>	<b>7</b>
<b>4. PRODICTATE MOBILE-INSTALLATION FOR ANDROID .....</b>	<b>8</b>
<b>5. PRODICTATE MOBILE-INSTALLATION FOR NOKIA.....</b>	<b>9</b>
<b>6. PRODICTATE MOBILE-INSTALLATION FOR BLACKBERRY .....</b>	<b>10</b>
<b>7. PRODICTATE MOBILE MAIN MENU .....</b>	<b>13</b>
<b>7.1. CONFIGURING PRODICTATE MOBILE .....</b>	<b>16</b>
<b>7.1.1. BASIC SETTINGS .....</b>	<b>16</b>
<b>7.1.2. LANGUAGE SETTINGS .....</b>	<b>17</b>
<b>7.2. E-MAIL SETTINGS .....</b>	<b>18</b>
<b>7.2.1. E-MAIL ADRESSEN .....</b>	<b>18</b>
<b>7.2.2. E-MAIL BODY .....</b>	<b>21</b>
<b>7.2.3. EMAIL SERVICE .....</b>	<b>22</b>
<b>7.3. LICENSE SETTINGS .....</b>	<b>25</b>
<b>7.4. LOG SETTINGS .....</b>	<b>28</b>
<b>7.5. PASSWORD SETTINGS.....</b>	<b>29</b>
<b>7.6. SPACE SETTINGS .....</b>	<b>31</b>
<b>7.7. NETWORK SETTINGS .....</b>	<b>32</b>
<b>7.8. FIELD SETTINGS .....</b>	<b>33</b>
<b>7.9. FILENAME SETTINGS.....</b>	<b>35</b>
<b>7.10. ENCRYPTION SETTINGS.....</b>	<b>36</b>
<b>7.10.1.1. CREATION OF SSL KEYS.....</b>	<b>36</b>
<b>7.10.2. IMPORTING SSL KEYS.....</b>	<b>38</b>
<b>7.10.3. ENCRYPTION SETTINGS.....</b>	<b>40</b>
<b>7.11. PREDEFINED SETTINGS .....</b>	<b>42</b>
<b>7.12. COLOUR SETTINGS.....</b>	<b>45</b>
<b>7.13. MAIN MENU .....</b>	<b>46</b>
<b>8. FAQ .....</b>	<b>58</b>
<b>9. SUPPORT .....</b>	<b>59</b>
<b>10. INDEX .....</b>	<b>60</b>

## Introduction

Brainworks GmbH is manufacturing individual and high-quality dictation software and solutions for dictation management. With our ProDictate mobile software we provide a large-scale solution which guarantees long-term benefits for our customers.

Brainworks GmbH develops its ProDictate mobile software exclusively on the J2ME platform. It is based on Sun Java standard MIDP2.0. and can thus be run on many mobile phones (see "Supported Devices"). This focusing enables us to improve the quality of our solutions significantly and to achieve higher efficiency.

This document describes how the ProDictate mobile software is installed and configured in order to fulfill a company's individual requirements and policies.

## Overview

In order to use ProDictate mobile, you need a java capable (J2ME) mobile phone supporting CLDC 1.1. For the installation you need the installation files which you have to install according to the instructions.

ProDictate mobile is focussed on provisioning a dictation solution. Due to its enormous flexibility, ProDictate mobile is suitable to be used with current smartphone models deployed in a modern company.

## 1. How to get a License

In order to get a license code for ProPlayer, please contact your local distributor. You have to deliver some information to receive a valid license.

Please register in the web shop at [www.mybrainworks.eu](http://www.mybrainworks.eu). Should you have no account yet, please create a new account at <https://www.mybrainworks.eu/en/user/register>.

Fill in the form with all necessary information, then click "Register". Log in into the web shop with your user name and password and purchase a ProDictate mobile license at <https://www.mybrainworks.eu/en/shop/software/promobile>.

After having purchased a ProDictate mobile license, you will receive a confirmation by email with your license key.

## 2. Requirements

Smartphones have to fulfill several requirements for a faultlessly working ProDictate mobile software, but basically you need the Sun Java Standard MIDP 2.0 and a CLDC 1.1 supporting mobile phone.

Please note the information's in the chapter "Supported Devices" also".

### 3. ProDictate mobile-Installation OTA

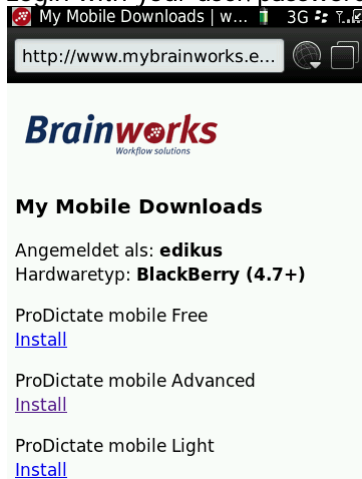
You can use Over the Air Download to install ProDictate mobile on your Smartphone. Some Smartphones may not support OTA installation. If you have problems with OTA please contact our support for further help or try to install ProDictate mobile through your Desktop.

First of all you need to register at our online shop at <https://www.mybrainworks.eu/en/user/register>.

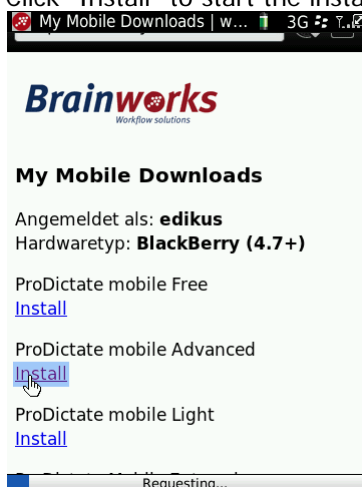
To register for our online shop, simply fill in the application form and submit it. You will receive the user name and password by return email. After the registration process you need to order one of the ProDictate mobile products available at the online shop. After completing the order you can start the installation over OTA.

Follow the below steps to install ProDictate mobile over-the-air (OTA):

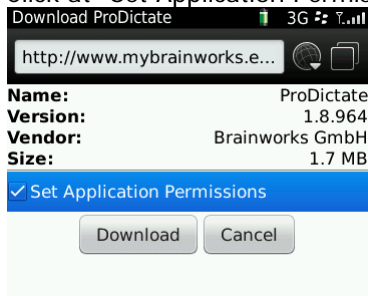
1. Use your Smartphone browser to access: <http://www.mybrainworks.eu/ota>
2. Login with your user/password



3. Choose the software edition you want to install
4. Click "Install" to start the installation



5. Click at "Set Application Permissions"



6. Set all setting to "Allow".
7. Click at the BB menu and than "Save"
8. Download and installation process will be started.
9. After installation you may need to restart your Smartphone

## 4. ProDictate mobile-Installation for Android

If the installation of ProMobile over OTA cannot be done, follow the installation instructions.

1. Login to our online shop
2. Open the URL [https://www.mybrainworks.eu/en/my\\_downloads](https://www.mybrainworks.eu/en/my_downloads)
3. Choose Android as hardware type and click on "Show"

[Download by Mobile Device](#)

**Hardware type:**  
  
Please specify the hardware type

4. Just double-click on the zip file to download on your PC

**Product:**  
[ProDictate Mobile Free 1.8](#)  
**Download:**  
 17\_06\_2011\_1.8.954\_Android.zip  
**Hardware:**  
 Android

5. Unzip the file ProMobile.apk in a folder
6. Click on the main menu "Market" at your Android Smartphone
7. Log in with your Google Market Account or create one
8. Install for example AppsInstaller from ModmyGphone.com
9. Connect your Android device with a USB cable to your PC
10. Connect as mass storage the SD card
11. Copy ProMobile "ProMobile.apk" into the root directory of the SD card
12. Disconnect the USB cable from your phone
13. Click on the main menu on AppsInstaller
14. Select ProMobile at the AppsInstaller window
15. Click "Install"
16. After the successful installation, click "Done"
17. Quit AppsInstaller and start ProMobile from the main menu

## 5. ProDictate mobile-Installation for Nokia

Please use Nokia PC Suite Installing ProDictate mobile on Nokia Smartphones.

1. Connect your handset to the PC
2. Open the Nokia PC Suite



3. Choose the Application Installer



4. Navigate to the directory where the ProMobile JAD and JAR files are stored
5. Make sure that the installer recognizes the publisher
6. Click on the right arrow to start the installation process



7. You will need to end the installation on the device itself.

## 6. ProDictate mobile-Installation for BlackBerry

First, all applications which are to be installed on ProDictate mobile, have to be transferred to the computer.

Unzip the content of the file "ProDictate mobile.zip" into a directory and copy the files "ProDictate mobile.jar" and "ProDictate mobile.jad" into a directory on your mobile phone, from which you can start ProDictate mobile as a Java application.

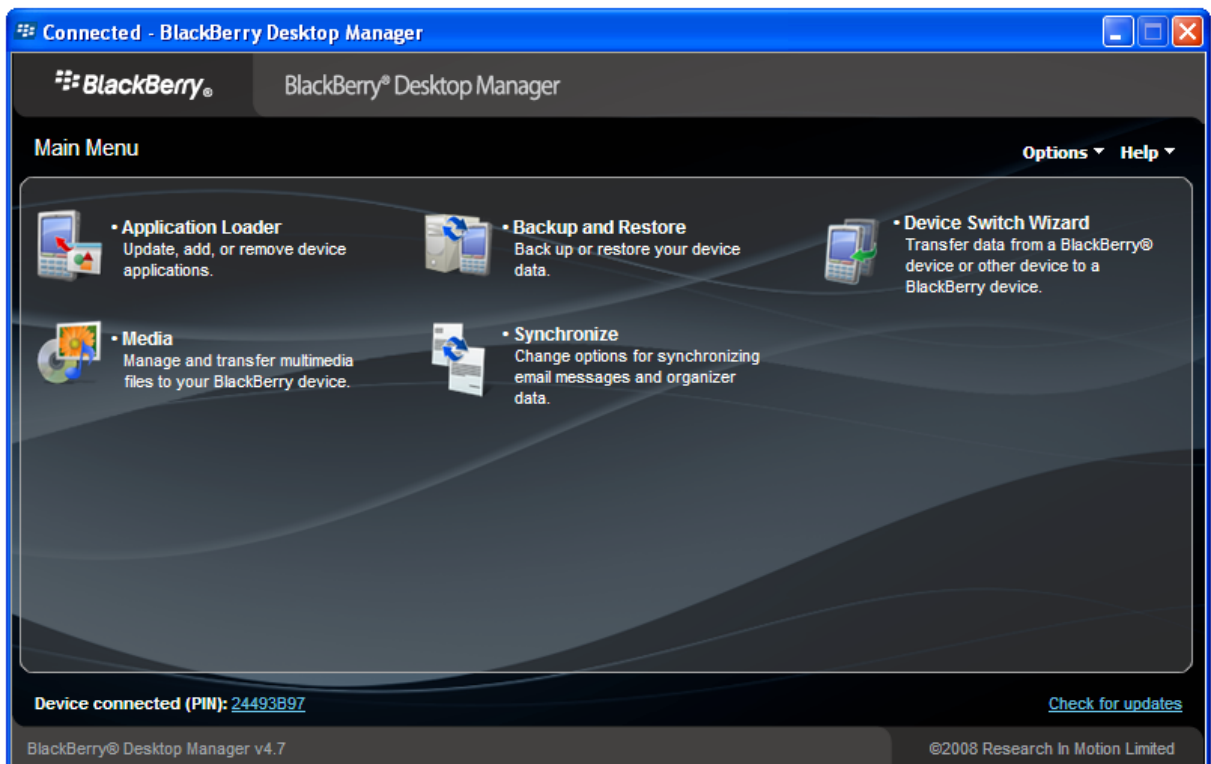
For a ProDictate mobile installation on your BlackBerry, there should be either the Desktop Manager be installed (from a CD) on the local PC, or you use the Web Desktop Manager deployed in the enterprise network.

1. Connect your BlackBerry with its USB cable and start the Desktop Manager.

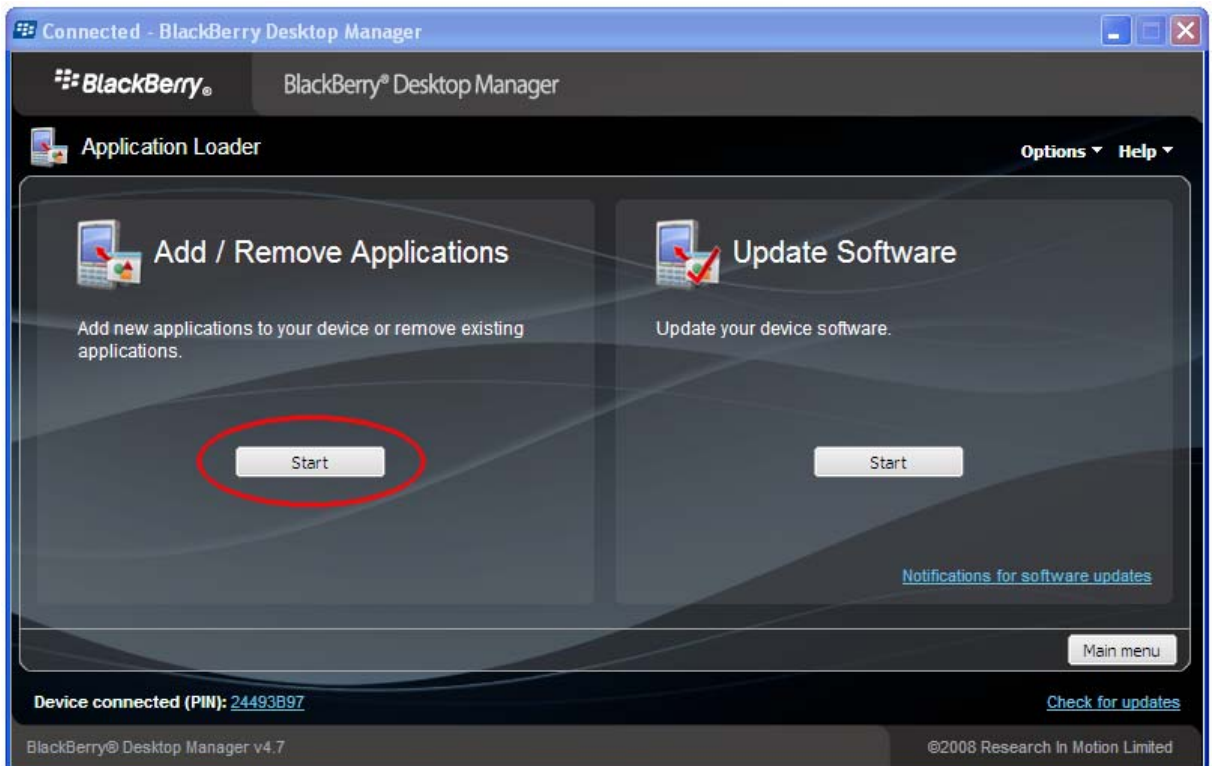


Desktop Manager

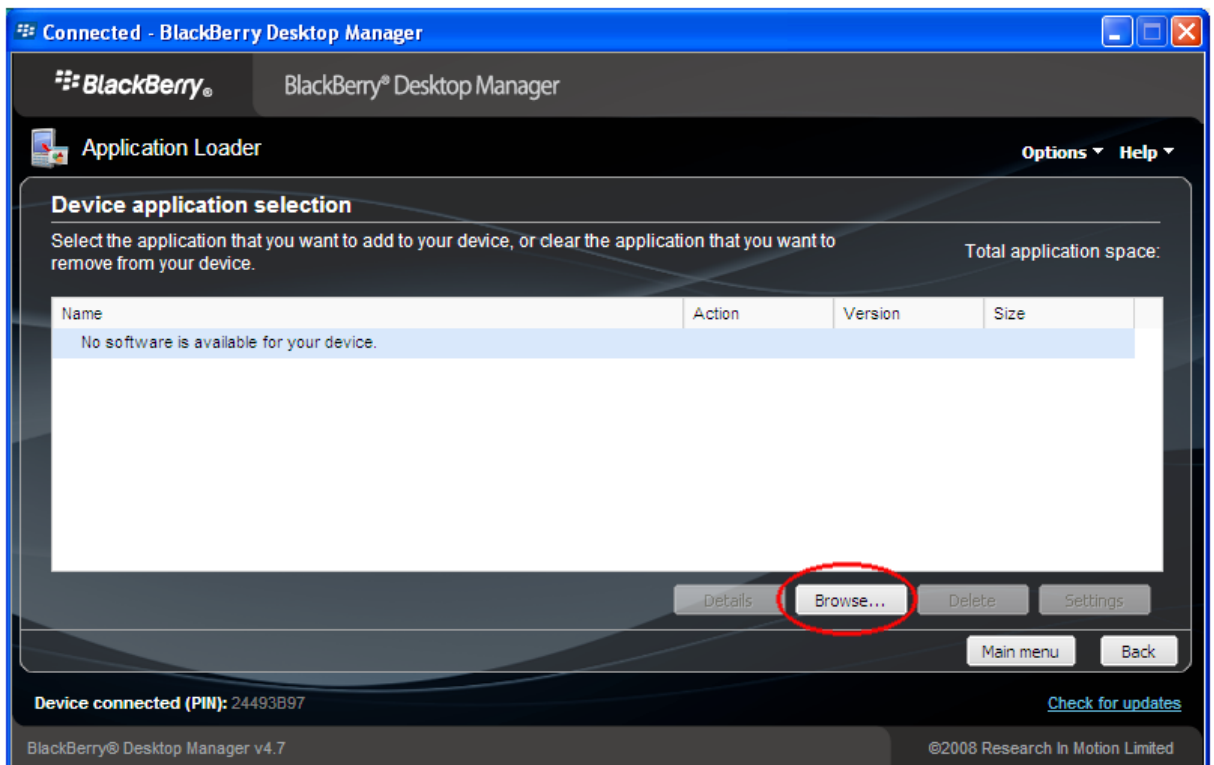
2. Click „**Application Loader**“ to install ProDictate mobile.



3. Click then „**Add /Remove Applications**“.



4. Click „**Browse**” and select the directory containing the installation files.



5. Select the file ProDictate mobile.alx.
6. ProDictate mobile appears in the list of applications.

7. Click „**Next**“ to install the application.
8. After the installation has been completed successfully, click „**Finish**“.
9. If the installation has been successful, delete the directory containing the unzipped installation files.
10. You have successfully installed ProDictate mobile.

**NOTE!**

If the installation is incomplete or has been aborted with an error, please check if ProDictate mobile supports the Smartphone.

Your BlackBerry will perform security verification when you launch the application the first time due to the special APIs used in this phrase book. Please be patient. This will happen only once.

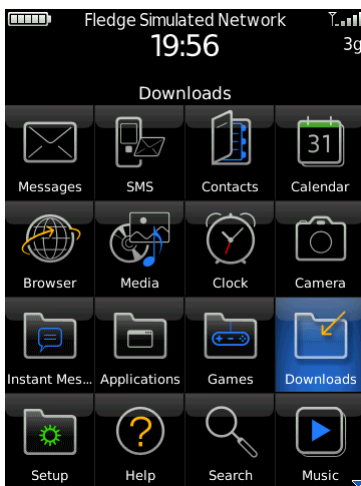
## 7. ProDictate mobile Main Menu

You need access to the internet for your BlackBerry's license activation. Please check your Smartphone's internet access before you start the application.

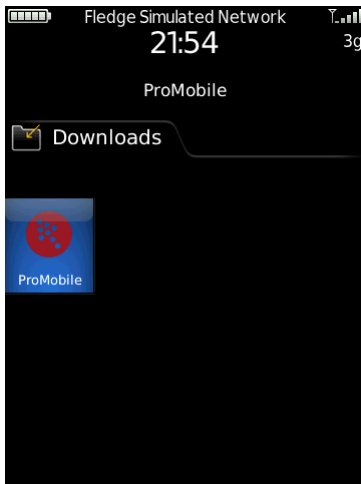
1. Click your BlackBerry's menu button to start ProDictate mobile.



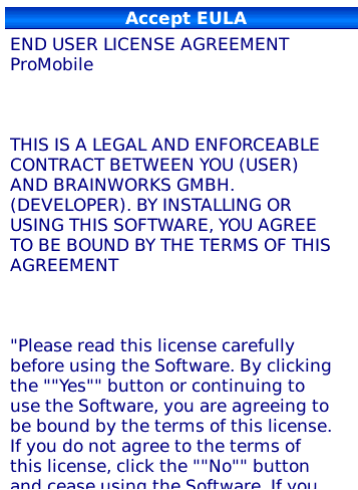
2. Then click the "Downloads" menu.



3. After clicking the "ProDictate mobile" application, the terms of use are shown at the first login.



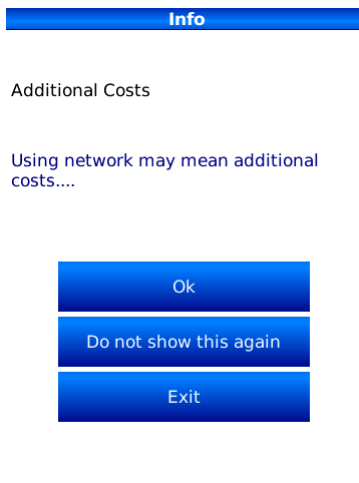
4. Read the terms of use carefully. If you agree with the terms, confirm them by clicking "ACCEPT", else close the application.



5. The application is started.



6. Using the ProDictate mobile application can involve additional expenses for the data service.



7. Please confirm this message with "OK". If you do not want the message to appear again in the future, click „**Do not show it again**”.
8. You are now in ProDictate mobile's main menu.

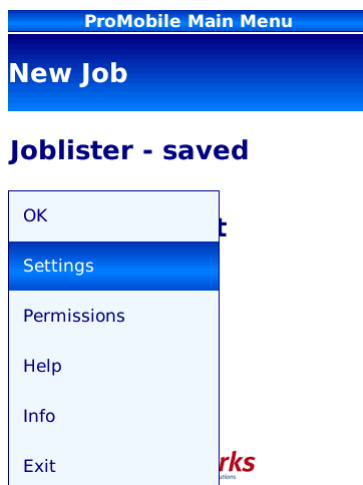


## 7.1. Configuring ProDictate mobile

ProDictate mobile offers several settings to adjust the application to the user's needs. By default, ProDictate mobile is preconfigured for an immediate deployment. Nevertheless, the email settings have to be adjusted for sending dictations.

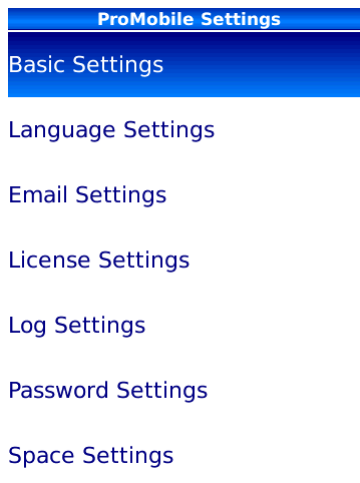


Press the menu button and click on **"Settings"** to perform the above mentioned settings.

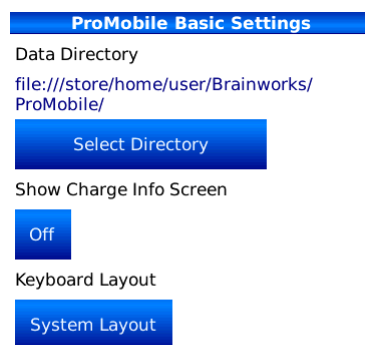


### 7.1.1. Basic settings

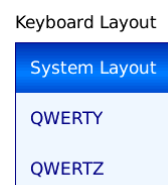
1. Press **"Basic Settings"** to adjust the standard directory for the audio files.



- Choose another directory in the phone memory or on the memory card if necessary and confirm the change with "OK". By choosing the memory card as location for the directory, the total time of stored dictations can be extended depending on the capacity of the card.



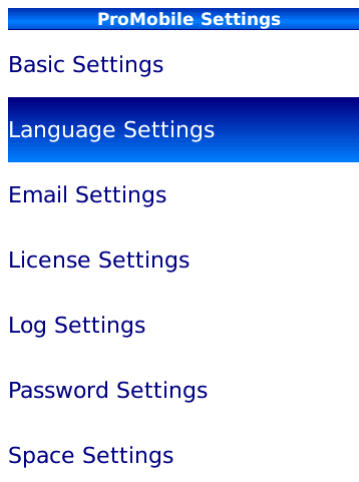
- The "**Show Charge Info Screen**" informs you about incurring costs, if any, for an internet connection. If you want this display to be skipped at the login, select the option "Aus".
- The „**Keyboard Layout**“ enables you to adjust the keyboard layout for the send key "7". ProDictate mobile detects the keyboard layout by default and you don't have to change the settings. For the English keyboard layout the QWERTY setting should be chosen



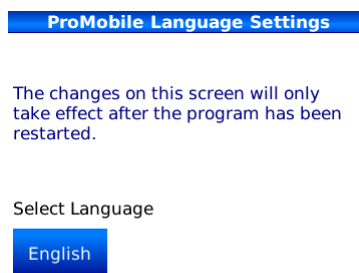
### 7.1.2. Language Settings

By choosing a language, it will be (among others) defined, in which language the menu is shown.

1. Press "**Language settings**" to adjust the default directory for the language.



2. You can set the requested language by the option selection.



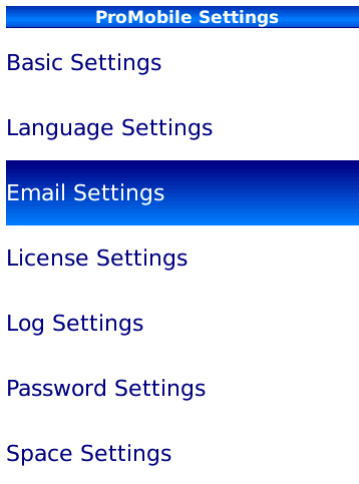
3. The menu language in "**Device Setting**" is chosen by default and adopts the language of the country setting. The languages German, English and others can also be chosen directly.
4. In order to do so, click "**Device Setting**" and chose the required language.
5. Confirm the change with „**OK**“.
6. The menu language will be activated at restarting the application.

## 7.2. E-Mail Settings

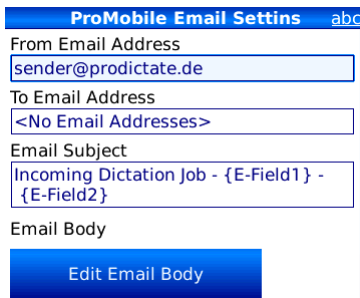
In the menu „**E-Mail Settings**“ you can set the parameters for your email account and the email recipient. If you use an SMTP account to send the dictations, then you need the access information's for your email account. In case of a BlackBerry Press Service utilization, the created email account will be used.

### 7.2.1. E-Mail Adressen

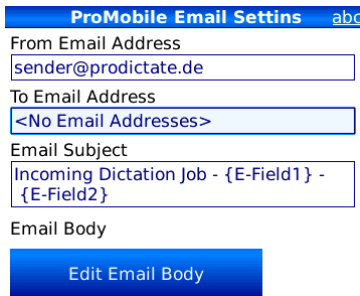
1. Press „**E-Mail Settings**“ to start the email configuration.



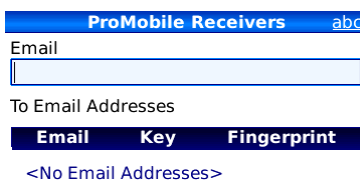
- For dictation transfer it is necessary to enter the email address of the sender (user). You can also add the sender via address book.



- Click the input field for the recipient email to address the recipient.



- Click on "OK".



- In order that dictations can reach the recipient, you have to enter his/her email address.

**ProMobile Receivers** abc

Email

To Email Addresses

Email	Key	Fingerprint
<No Email Addresses>		

- Finally click the menu button.

**ProMobile Receivers** abc

Email

To Email Addresses

Email	Key	Fingerprint
<No Email Addresses>		

OK
Contacts
<b>Add</b>
Back

- Click "**Add**" to insert an email address into the list.

**ProMobile Receivers** abc

Email

To Email Addresses

Email	Key	F
receiver@prodictate.de	Empty	-

- You can repeat the procedure to add further email addresses.

**ProMobile Receivers** abc

Email

To Email Addresses

Email	Key	F
receiver@prodictate.de	Empty	-
receiver2@prodictate.de	Empty	-

- You can also add a contact from the address book directly. Click the menu button and then on "**Contacts**".

**ProMobile Receivers** abc

Email

To Email Addresses

Email	Key
receiver@prodictate.de	Empty
receiver2@prodictate.de	Empty

OK

Contacts

Add

Back

10. Confirm your changes with „OK“.

**ProMobile Email Settins** abc

From Email Address  
sender@prodictate.de

To Email Address  
receiver@prodictate.de

Email Subject  
Incoming Dictation Job - {E-Field1} - {E-Field2}

Email Body  
Edit Email Body

Email Service  
HTTP

Fallback Service  
Off

### 7.2.2. E-Mail Body

1. Go to the menu item „**Edit E-Mail Body**“, to edit the text of an email.

**ProMobile Email Settins** abc

From Email Address  
sender@prodictate.de

To Email Address  
receiver@prodictate.de

Email Subject  
Incoming Dictation Job - {E-Field1} - {E-Field2}

Email Body  
Edit Email Body

Email Service  
HTTP

Fallback Service  
Off

- Open the menu and click „OK”.

- By default, the first E-Fields and corresponding data are transferred. Edit the Body and confirm your input with "OK".

### 7.2.3. Email Service

You are free to choose the actual connectivity services that you will use.

- Following "Email Service" options for dictation transfer are available::

SMTP:	APN data volume
BlackBerry:	BES data volume
HTTP:	APN data volume
ProDictate:	BES data volume

- The „Email Service” should be chosen according to your mobile phone contract. Please note that usage of the service involves further data traffic which could cause further costs.

- Four services are available for dictation transfer. The HTTP service needs no username and no password. The dictation transfer is handled by the Brainworks email server and addressee and destination address are needed. Furthermore, the network service has to be adjusted in "**Network Settings**" according to your contract terms. You can find more information under "**Network Settings**".
- To use the SMTP service, choose for the „**Email Service**“ the Option „**SMTP**“.



**ProMobile Email Settings**

Email Service  
 SMTP

Fallback Service  
 Off

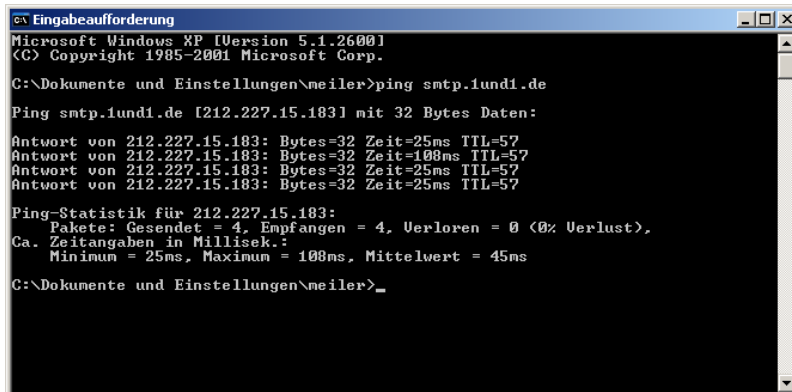
Fallback Question  
 Off

The following items are only required for the SMTP method:

Email Server

Encrypted Communication (SSL)  
 Off

- Enter the SMTP server's IP address into the menu. Due to a DNS problem in BlackBerry devices, the domain name cannot be resolved correctly. To learn, which IP address your server has, ping the server in the command prompt. In our example the smtp.service.net server has been pinged.



```

c:\Eingabeaufforderung
Microsoft Windows XP [Version 5.1.2600]
(C) Copyright 1985-2001 Microsoft Corp.

C:\Dokumente und Einstellungen\meiler>ping smtp.lundi.de

Ping smtp.lundi.de [212.227.15.183] mit 32 Bytes Daten:

Antwort von 212.227.15.183: Bytes=32 Zeit=25ms TTL=57
Antwort von 212.227.15.183: Bytes=32 Zeit=100ms TTL=57
Antwort von 212.227.15.183: Bytes=32 Zeit=25ms TTL=57
Antwort von 212.227.15.183: Bytes=32 Zeit=25ms TTL=57

Ping-Statistik für 212.227.15.183:
    Pakete: Gesendet = 4, Empfangen = 4, Verloren = 0 (0% Verlust),
    Ca. Zeitangaben in Millisek.:
    Minimum = 25ms, Maximum = 100ms, Mittelwert = 45ms

C:\Dokumente und Einstellungen\meiler>_

```

- Username, password for your SMTP account, sender and recipient of the email also have to be entered.
- For the connection to the ProDictate dictation system, choose for "**Email Service**" the Option "**ProDictate**".

**ProMobile Email Settings**

Email Service

Fallback Service

Fallback Question

The following items are only required for the SMTP method:

Email Server

Encrypted Communication (SSL)

8. Enter the ProDictate IP address.

**ProMobile Email Settings** abc

The following items are only required for the SMTP method:

Email Server

Encrypted Communication (SSL)

Email User

Email Password

The following item is only required for ProDictate method:

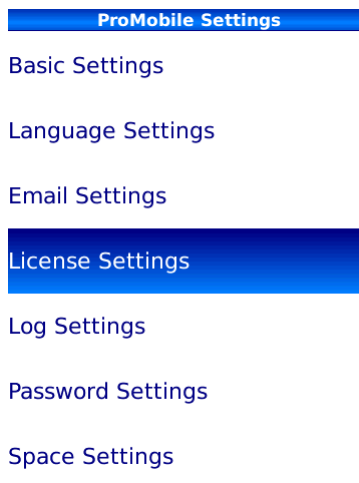
ProDictate Server Url

9. Finish the input for „**Email Service**“ and click "OK".

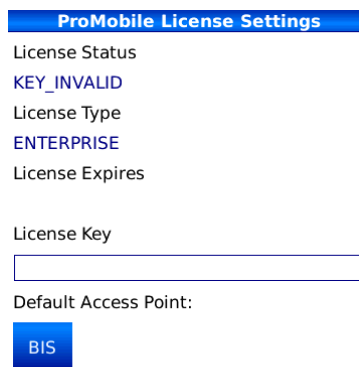
## 7.3. License Settings

In the following section you will find explanations concerning the menu item "License". The license editor shows you all existing and all earlier entered activation codes with expiration date and status (key active or inactive). The license editor dialogue allows you to add and delete activation codes.

1. Press „**License Settings**“ to activate the license.



2. Enter your license key.



3. Click "**OK**" in the menu to verify the license.

**ProMobile License Settings** abc

KEY\_INVALID  
License Type  
ENTERPRISE  
License Expires

License Key  
[123456789011]

Default Access Point:  
BIS

- Click **"OK"** in the menu to verify the license.

**Info**

Configuration Saved

Your settings have been saved

- Click **"OK"** to connect to the License Manager.

**Confirmation**

Continue?

ProMobile needs to check the validity of the entered license. An internet connection is necessary. There might be additional costs for this connection. Do you wish to continue?

Ok

Exit

- The license server now checks the existence and validity of the entered license key. After successful verification, the license key is activated on your device.

**Info**

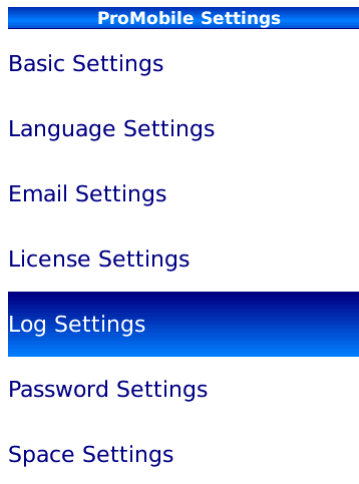
License Check Successful

Your license key has been successfully activated.

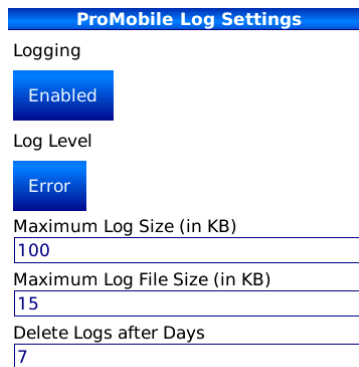
## 7.4. Log Settings

In the menu „**Log Settings**“ you find useful additional functions to store event entries as text files. Occurred problems are logged here. The logging is activated on your device by default. Click "Show Log files" to view the logs.

1. Press „**Log settings**“ to enter the log settings



2. Change the option "**Logging**" from "Enabled" into "Disabled" to prevent logging.

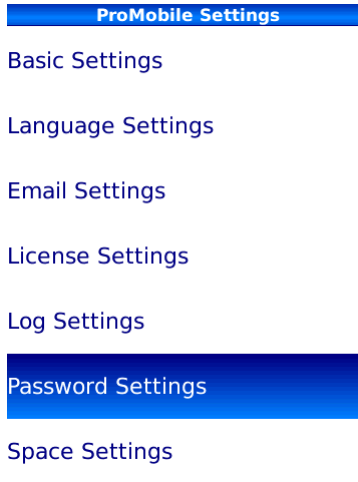


3. Use the option „**Log Level**“ to adjust the information content of error messages in the error log.
4. The maximally reserved memory size for the log files and the maximum file size can be adjusted to your needs.
5. The log files are deleted within a certain time cycle in order to avoid device memory overflow. The deletion routine is set to 7 days by default and can be adjusted to the user's needs.
6. Confirm changes with „**OK**“.

## 7.5. Password Settings

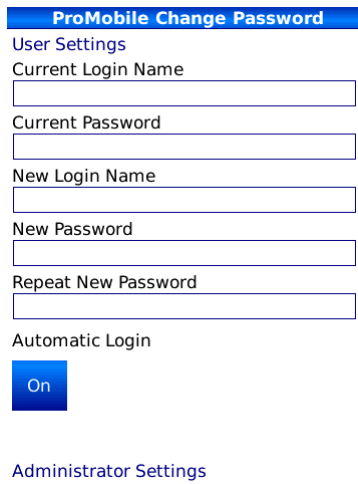
In this menu username and password are set for the user login.

1. Press „Password Settings” to define the user settings.



The screenshot shows a vertical menu titled "ProMobile Settings". The menu items are: Basic Settings, Language Settings, Email Settings, License Settings, Log Settings, Password Settings (highlighted in blue), and Space Settings.

2. Enter in „User Settings” user name and password for the login. The password has to be confirmed by entering it twice. For the activation of this type of login, the option „**Automatic Login**” has to be set to "Off".



The screenshot shows a form titled "ProMobile Change Password". The form contains the following fields and options:

- User Settings
- Current Login Name:
- Current Password:
- New Login Name:
- New Password:
- Repeat New Password:
- Automatic Login:  On
- Administrator Settings: [Administrator Settings](#)

3. By the option „**Administrator Settings**” the administrator gains access to the ProDictate mobile settings in order to prevent unauthorized persons to change them. Enter the password in the „ **Administrator Settings**” for the settings login. The password has to be confirmed by entering it twice.

**ProMobile Change Password**

Repeat New Password

Automatic Login

On

Administrator Settings

Current Password

New Password

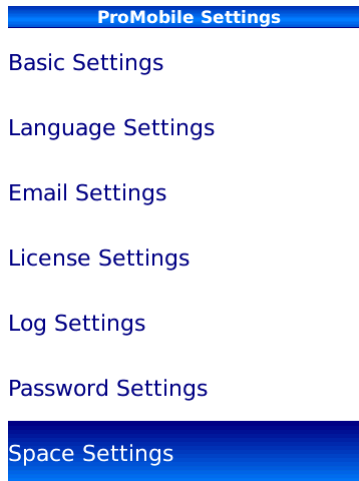
Repeat New Password

4. Confirm your settings with „OK”.

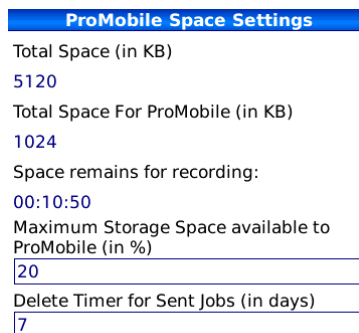
## 7.6. Space Settings

In the menu „**Space Settings**” you can allocate more memory for the ProDictate mobile application.

1. Press „**Space Settings**” to define the memory requirement.



2. Enter the memory size which should be allocated for the application in percent. The allocated memory is automatically converted into KB and displayed in the menu. Additionally, a deletion routine, defined in days, can be adjusted for sent dictations.

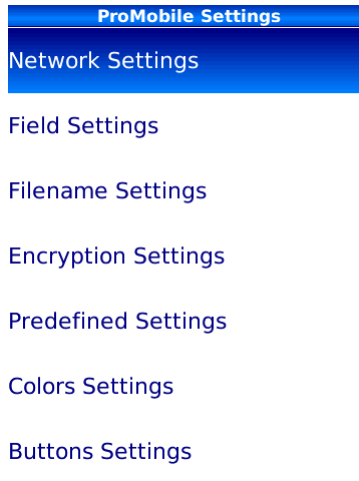


3. Confirm your settings with „**OK**”.

## 7.7. Network Settings

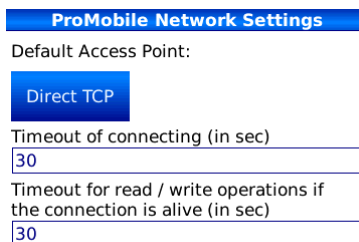
In the "**Network Settings**" menu an access point can be defined as default connection. This setting is not supported by all devices. ProDictate mobile checks if your device supports this option. If not, you will see a message on the display field.

1. Following transmission possibilities are available:



2. Following transmission possibilities are available:

BIS: BlackBerry Internet Service  
 BES: BlackBerry Enterprise Service  
 Direkt TCP: APN Service  
 WLAN: Access Point

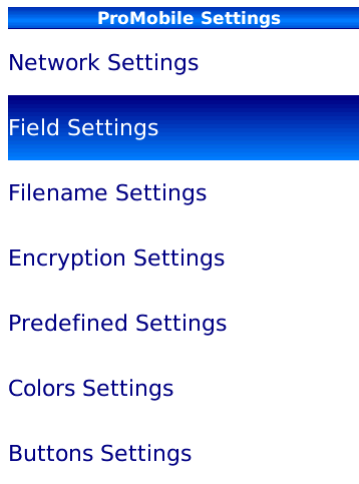


3. BIS and BES transmission are only possible after registration and configuration of the BlackBerry service. For further questions please contact your administrator or your provider.
4. Before Direct TCP can be used, the APN configuration (internet node) has to be completed. For further information see „FAQ“. <http://www.mybrainworks.eu/en/faq/27>
5. Choose a default transmission method.
6. Confirm your settings with „**OK**“.

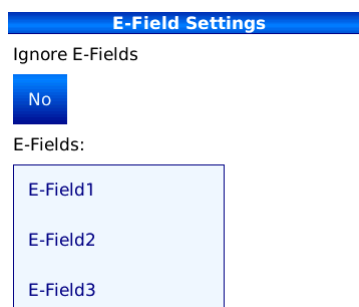
## 7.8. Field Settings

In the „**Field Settings**“ menu you define the meta data which you store with the dictation. These meta data are needed by the transcriptionist to distinguish between the dictations. Additionally, you obtain a better overview about the created dictations in your dictation list.

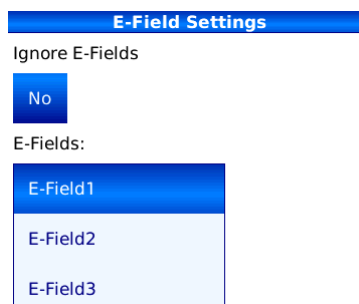
1. Press „**Field Settings**“ to define the meta data.



2. Three e-fields are defined for the meta data by default. You can add further e-fields or delete present ones.
3. The display of meta data can be skipped by „Ignore E-Fields“ and the option "**Yes**". The e-field will then be hidden at the launch of a dictation.



4. To edit the settings of an e-field, mark it and click "**Edit**".



5. In „Edit E-Field“ name and type of an e-field can be changed. Adjust the caption of an e-field to your needs. With "E-Field Typ" you can choose between three possibilities. If you choose

"String", only alphanumerical input is possible, if your choice is "Numeric", the input has to be in digits. The type "Select" will be described further below.

**Edit Field**

Field Id  
E-Field1

Field Type  
**STRING**

Label  
Name

6. E-Field3 is by default defined as „Select” type. Click on "Edit" to adjust the settings.

**Edit Field**

Field Id  
E-Field3

Field Type  
**SELECT**

Label  
Worktype

**Labels**

7. With this e-field type values can be deposited, which make a repeated input unnecessary. Klick on "Labels" to add or delete further values.

**Edit Select Labels** abc

**Add Select Label**

Labels

Urgent  
Normal  
Protocol

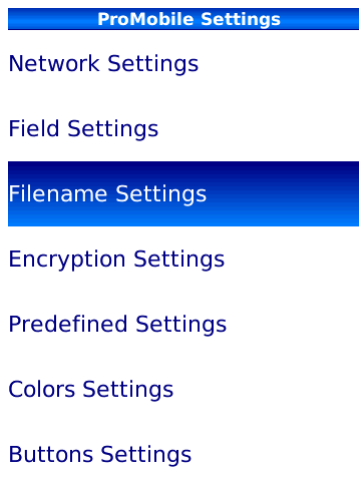
Default Select Label  
**Urgent**

8. Confirm the settings with „OK”.

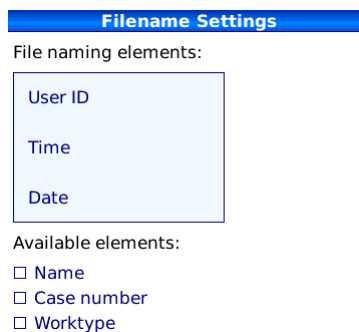
## 7.9. Filename Settings

In the menu „**Filename Settings**“ you can define the name of the audio file which is sent to the recipient. By file names the transcriptionist can distinguish between the dictation. Additionally, you obtain a better overview about the created dictations in your dictation list.

1. Press „**Filename Settings**“ to define the file name.



2. Choose the available elements from the list and click "**Add**". The sequence of the chosen elements can be changed by the sorting functions "**Up**" and "**Down**".



3. Confirm your settings with „**OK**“.

## 7.10. Encryption Settings

All sensitive data and information sent over the internet have to be protected and encrypted against spoofing, copying and manipulation. Moreover, beside these requirements of confidentiality and integrity, at transmitting the data the authenticity of sender and recipient also has to be ensured. Secure Socket Layer (SSL), as a hybrid encryption protocol, is especially suitable for transmitting data over the internet. SSL with AES/DES encryption offers highest security standards and is the perfect solution for enterprises looking for an efficient and cost-effective method to secure their imported data.

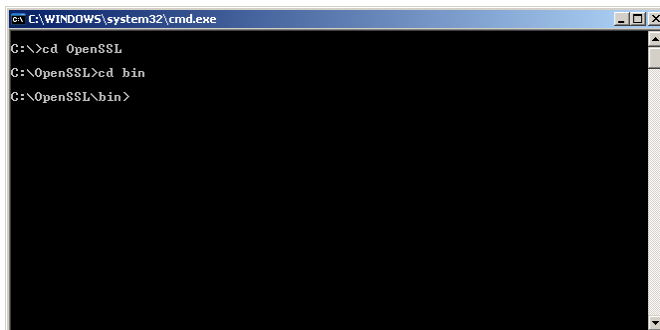
### 7.10.1.1. Creation of SSL Keys

Unencrypted dictations are sent with the ".amr" extension and are not secured against third party access. After AES/DES encryption has been activated, dictations are created with the extension "\*prmbx" and can only be played back by ProPlayer with the corresponding SSL key.

You need an SSL key which is generated with the OpenSSL application for the encryption. Download the most recent version of "Win32OpenSSL\_Light-0\_9\_8j.exe" for Windows and install it on your PC.

Download: <http://www.slproweb.com/products.html>

1. After the successful installation, start the command window and change into the „C:\OpenSSL\bin“ directory“.



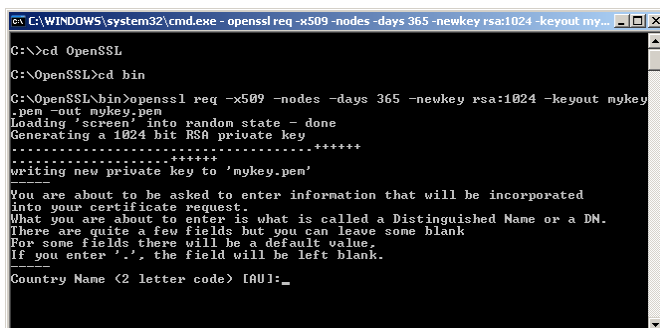
```

C:\WINDOWS\system32\cmd.exe
C:\>cd OpenSSL
C:\OpenSSL>cd bin
C:\OpenSSL\bin>

```

2. Enter following command at the command line and confirm your input with Enter:

```
openssl req -x509 -nodes -days 365 -newkey rsa:1024 -keyout mykey.pem -out mykey.pem
```



```

C:\WINDOWS\system32\cmd.exe - openssl req -x509 -nodes -days 365 -newkey rsa:1024 -keyout my...
C:\>cd OpenSSL
C:\OpenSSL>cd bin
C:\OpenSSL\bin>openssl req -x509 -nodes -days 365 -newkey rsa:1024 -keyout mykey
.pem -out mykey.pem
Loading 'screen' into random state - done
Generating a 1024 bit RSA private key
.....+++++
writing new private key to 'mykey.pem'
-----
You are about to be asked to enter information that will be incorporated
into your certificate request.
What you are about to enter is what is called a Distinguished Name or a DN.
There are quite a few fields but you can leave some blank
For some fields there will be a default value,
If you enter '.', the field will be left blank.
-----
Country Name <2 letter code> [AU]:_

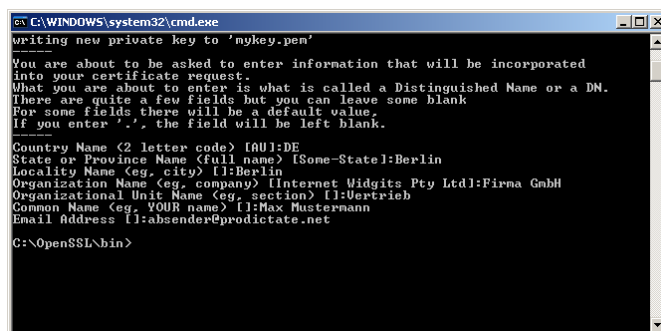
```

3. Now you will be requested to provide some information about your enterprise and your person. Please complete the input at the prompts to create the SSL key.

Example:

Country Name (2 letter code) [AU]:DE  
State or Province Name (full name) [Some-State]:Berlin  
Locality Name (eg, city) []:Berlin  
Organization Name (eg, company) [Internet Widgits Pty Ltd]:Firma GmbH  
Organizational Unit Name (eg, section) []:Vertrieb  
Common Name (eg, YOUR name) []:Max Mustermann  
Email Address []:absender@prodictate.net

4. Confirm your input with Enter.

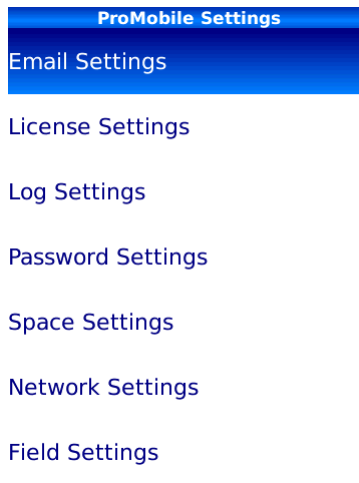


```
C:\WINDOWS\system32\cmd.exe
writing new private key to 'mykey.pem'
-----
You are about to be asked to enter information that will be incorporated
into your certificate request.
What you are about to enter is what is called a Distinguished Name or a DN.
There are quite a few fields but you can leave some blank
For some fields there will be a default value,
If you enter '.', the field will be left blank.
-----
Country Name (2 letter code) [AU]:DE
State or Province Name (full name) [Some-State]:Berlin
Locality Name (eg, city) []:Berlin
Organization Name (eg, company) [Internet Widgits Pty Ltd]:Firma GmbH
Organizational Unit Name (eg, section) []:Vertrieb
Common Name (eg, YOUR name) []:Max Mustermann
Email Address []:absender@prodictate.net
-----
C:\OpenSSL\bin>
```

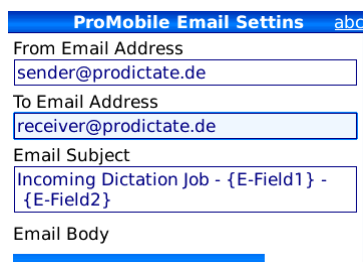
5. The SSL-Key "mykey.pem" with the personal information has been created and is located in the "C:\OpenSSL\bin" directory. You need an individual key for each user. Please store the keys safely. The key is needed for the play back on the PC and has to be imported into the ProPlayer play back software. You can find more information in the manual delivered with ProPlayer.
6. Subsequently, transfer the SSL key "mykey.pem" with the data cable or with an SD memory card to your BlackBerry.

## 7.10.2. Importing SSL Keys

1. Press „**E-Mail Settings**” to import the SSL key.



2. Click „**To Email Address**”.



3. Select the recipient's email address.



4. With „**Add Public Key**” it is possible to install an SSL key remotely. This feature can be used with a ProDictate mobile-WebServer only. For further information see the ProDictate-WebServer manual.



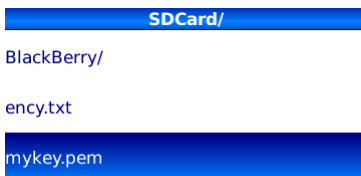
5. Click „**Select File**“, to open the directory containing the SSL key "**mykey.pem**".



6. Open the directory containing the SSL key „**mykey.pem**“.



7. Click „**mykey.pem**“ to import the SSL key.



8. After successful verification of the SSL key the import is completed.

**Info**

Import Completed

RSA key import completed.

- In the window you receive following message: „**RSA-key imported completed**“.

**ProMobile Receivers**

Email

To Email Addresses

Email	Key
receiver@prodictate.de	Stored 4
receiver2@prodictate.de	Empty -

- The RSA key's fingerprint is shown in the window.

**ProMobile Empfänger**

E-Mail:

E-Mail Empfänger:

**Fingerprint**

00:C9:0F:66:77:45:EA:A0:A5:84:8F:0F:

- Confirm your settings with „**OK**“.

### 7.10.3. Encryption Settings

- Press „**Encryption Settings**“ to change the settings.

**ProMobile Settings**

- Space Settings
- Network Settings
- Field Settings
- Filename Settings
- Encryption Settings**
- Predefined Settings
- Colors Settings

- The selected encryption will be used when a dictation is created.

**Encryption Settings**

Default Encryption Mode

**No Encryption**

Send encrypted emails with subject and body

Send encrypted emails with decrypted job descriptor

3. Select now AES or DES as default encryption.

**Encryption Settings**

Default Encryption Mode

No Encryption

DES

**AES**

Send encrypted emails with subject and body

Send encrypted emails with decrypted job descriptor

4. In the encryption mode no meta data are sent in the subject or in the email text by default. If you want the meta data of the e-fields to be sent in clear text, select „**subject and body**“.
5. For the integration into other systems sometimes it is necessary to list the meta data in a separate file. For this, select "**decrypted job descriptor**", then such a separate file will be sent with the audio file.

**Encryption Settings**

Default Encryption Mode

**AES**

Send encrypted emails with subject and body

Send encrypted emails with decrypted job descriptor

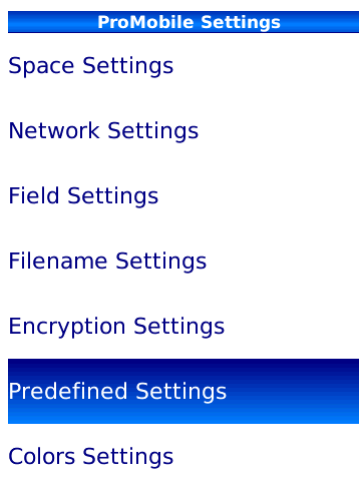
6. Confirm your settings with „**OK**“.

## 7.11. Predefined Settings

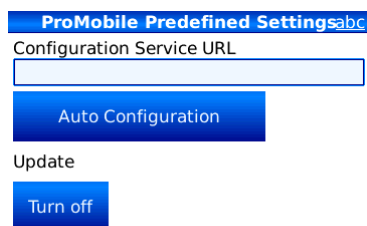
To provide patient oder customer base data for ProDictate mobile, the deployed ProDictate mobile web server has to be connected to ProDictate mobile. According to the type of content, usually a connection over the internal net is also needed. In the Menu "**Predefined Settings**" you can configure the connection to the ProDictate mobile web server. Administration and configuration of ProDictate mobile is done via the ProDictate mobile web server by further options in this menu.

This feature is available with a ProDictate mobile-WebServer only. For more information see the ProDictate mobile-WebServer manual.

1. Press "**Predefined Settings**" for the configuration.



2. For remote configuration of the Smartphone you have to enter the path of the "**Configuration Service URL**".



3. By clicking "**Auto Configuration**" you can start the remote configuration manually. "**Update**" defines the synchronization cycle for remote configuration.

**ProMobile Predefined Settings**

Configuration Service URL

Auto Configuration

Update

- Every Startup
- Once a week
- Every 3 Days
- Turn off

- For additional configuration click menu and **“Advanced Settings”**.

**ProMobile Predefined Settings** abc

Configuration Service URL

Auto Configuration

Update

- OK
- Advanced Settings
- Help
- Info
- License
- Back

- For synchronization with the data base **“Synchronization”** has to be activated. Please **“Enable”** the Synchronization service.
- In the **“Login Service URL”** and **“Field Service URL”** you have to enter the path of the login service and the E-field service. By clicking **“Synchronization”**, the data are transferred to the BlackBerry. For manual synchronization with the data base click **“Synchronize”**.

**ProMobile Advanced Predefined Se...**

Login Service URL

Field Service URL

Synchronization

- Disable
- Synchronize Fields and Database
- Synchronize only Database
- Reset Synchronization

Last used package

- At starting ProDictate mobile, the synchronization with the data base is automatically performed. At creating the dictation, the synchronization can be configured manually to retrieve short-term data.

- After synchronization has been finished, the ProDictate mobile server applies the e-field settings. The settings can be set back by clicking "**Reset Synchronization**". Then the e-fields will be set back to their original settings.



**ProMobile Server-Einstellungen**

Datenbank URL:

DB-Synchronisation:

Konfigurationsserver:

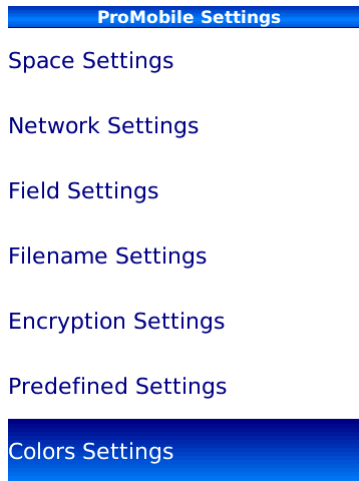
Konfigurationspaket:

- This feature can be used with a ProDictate mobile-WebServer only. For further information see the ProDictate mobile-WebServer manual.
- Confirm your settings with „**OK**“.

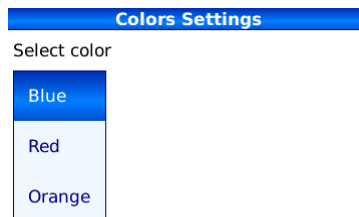
## 7.12. Colour Settings

In the menu „Colour Settings” you have the possibility to change ProDictate mobile's colour display.

1. Press „**Colour Settings**” to change the colour.



2. Change the colour by selecting another colour.



3. Confirm your settings with „**OK**”.

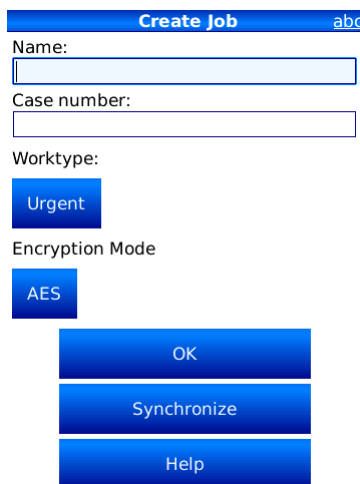
## 7.13. Main menu

In this section we explain the dictation recording, which is done in the „Main Menu“.

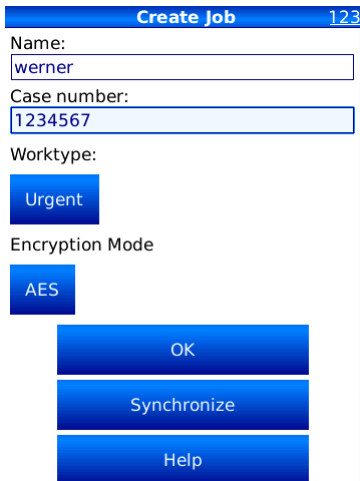
1. Press „**New Job**“ to begin a dictation and confirm this selection by "OK".



2. In this menu you can enter the meta data for the dictation.

A screenshot of a mobile application interface for creating a job. The title bar is blue and says "Create Job" with a small "abc" icon on the right. Below the title bar, there are four input fields: "Name:" with a text box, "Case number:" with a text box, "Worktype:" with a blue button labeled "Urgent", and "Encryption Mode" with a blue button labeled "AES". At the bottom of the form, there are three blue buttons stacked vertically: "OK", "Synchronize", and "Help".

3. E.g., fill in the e-fields "**Name**" and "**Case number**". In E-Field3 select a value you have defined earlier, which is in our example "**Urgrent**".
4. At creating the dictation, the "**Synchronize**" can manually to retrieve short-term data.



5. Confirm your settings with „OK“.
6. In the menu the audio recorder is opened, with which you can begin to record a dictation directly. In the upper part of the recorder you can see the name you have entered for it. The buttons can be controlled with the mouse or the buttons of the phone. The keyboard layout depends on the Smartphone.

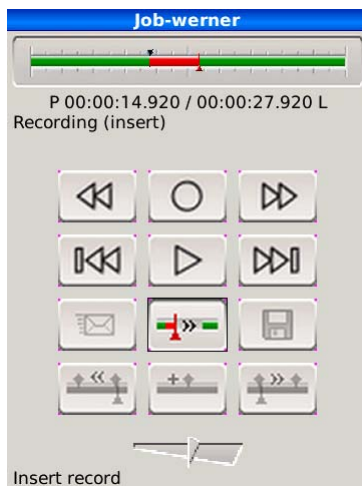


- |   |                                 |
|---|---------------------------------|
| 1 | Rewind                          |
| 2 | Record                          |
| 3 | Fast forward                    |
| 4 | Jump to beginning               |
| 5 | Play back                       |
| 6 | Jump to end                     |
| 7 | Send dictation                  |
| 8 | Insert record                   |
| 9 | Save dictation                  |
| * | - T M-Modus start/move to left  |
| 0 | - G M-Mark set                  |
| # | - V M-Modus start/move to right |
| I | Increase sound volume           |
| O | Decrease sound volume           |

7. Start recording a dictation by pressing button "2".



- With button "8" you can insert a piece of spoken text into an already existing dictation. Move the cursor by rewind or fast forward to the required position in the dictation. Click button "8" to start the insertion. With a second click on button "8" the insertion is finished.



- With button "0" marks can be placed in the dictation. With buttons "\*" and "#" you can jump from one mark to the other.



- By pressing the buttons "\*" or "#" (longer than two seconds) you start the marking mode at the position of the cursor. The marked section can be recorded again by using button "2" or played back by button "5".



- By clicking "**Escape**" you can end a dictation before you have actually finished it. You also have further editing functions for the dictations to your disposal. By the function "**Continue Recording**", the recording can be resumed. Apart from that, in this menu you can send, save or abort dictations.



- Click "**Continue Recording**".
- If you want to send a dictation, click button "7".
- Confirm with "**Yes**".
- Choose the recipient.

**Confirmation**

Are you sure?

Are you sure to send the job to the system?

Destination address:

receiver@prodictate.de

Yes

No

16. Confirm with **"Yes"**.

**Confirmation**

Are you sure?

Are you sure to send the job to the system?

Yes

No

17. Confirm with **"Yes"** to start the transmission. You are informed about the transmission progress by a progress bar showing the percentage of transmitted data.

**Please Wait**

Sending to ProDictate server...

9% complete

Access Point: Direct TCP

18. After a successful transmission, you receive a confirmation.

19. The sent dictation is stored in **"Joblister – sent"**. If the transmission has been aborted, the dictation is cached in **"Joblister - saved"** and marked red. The transmission can be repeated from the dictation list.

ProMobile Saved Jobs			
Date	Length	Name	
2010.01.13 22:49	00:00:03	sander	
2010.01.13 22:46	00:00:44	werner	
2009.09.11 18:25	00:00:13	sander	
2009.09.11 18:20	00:00:10	werner	

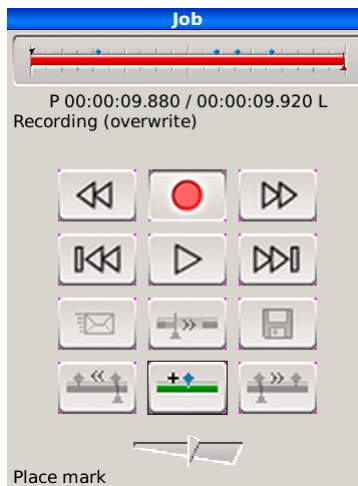
## 7.14.Recovery

After a possible crash, ProDictate mobile checks whether a dictation has been processed and has remained unfinished. If such an unfinished dictation is detected, ProDictate mobile starts a recovery routine with which the dictation is restored and then can be completed.

1. If such a dictation is detected, the recovery can be started. To do so, click "Yes".



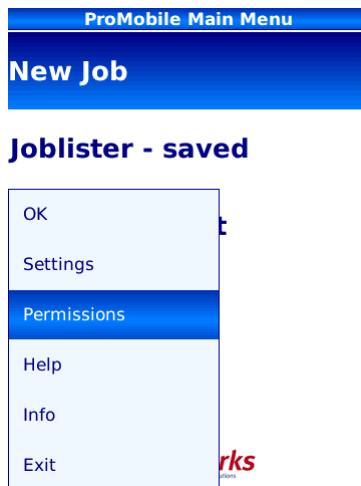
2. The recovery will now be started. Depending on the file size, this process can take a few seconds.
3. After the recovery, the dictation appears in the recorder.



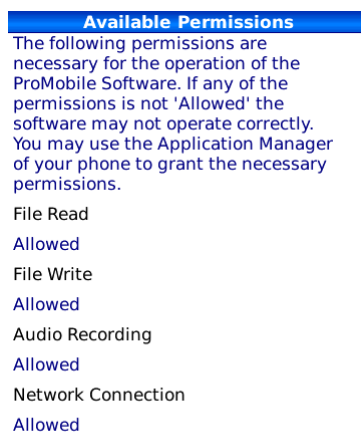
## 7.15.Permissions

In the main menu the rights for ProDictate mobile can be checked..

1. Click on "Menu"



2. Select „**Permissions**“. The rights for the application's correct functioning are shown in the display. Should one of the rights not be set on "**Allowed**".

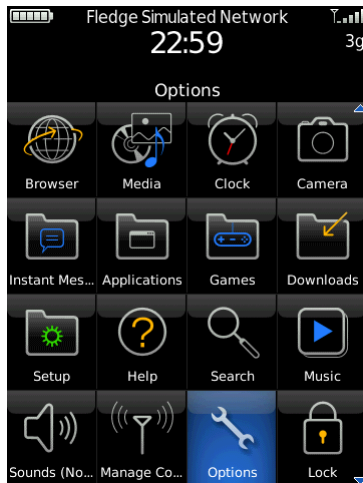


3. The settings have to be checked under "**Options**", "**Advanced Settings**" and "**ProDictate mobile**" in the menu "**Applications**".

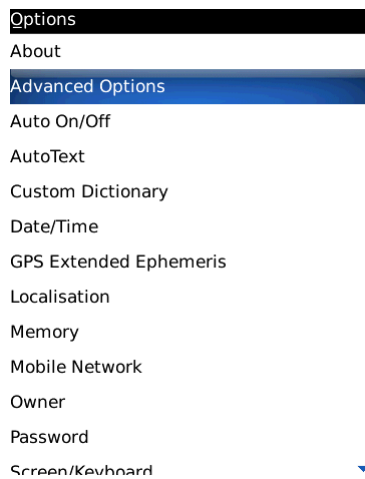
**ProMobile Properties**  
Type: Application  
Title: ProMobile  
Description:  
Version: 1.1  
Size: 1705220 Bytes  
Created: 8 Jan 2010 12:14  
Vendor: <unknown>  
Applications:  
ProMobile  
ProMobile  
Hash:  
FC9B 1BDC B09D D7A4 9EDD  
A9E9 1FA1 BE06 EBC3 C551  
Signer IDs:  
RBB, RCR, RRT

## 7.16. Phone Settings

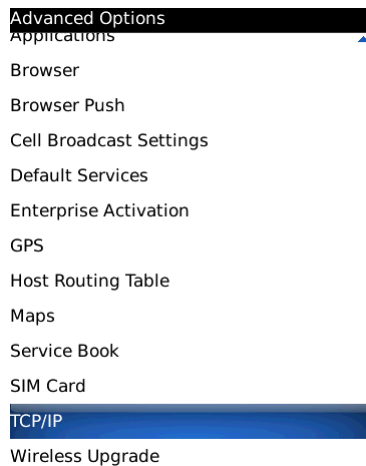
1. Click on **"Options"** in the phone menu.



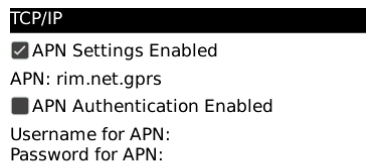
2. Then click on **„Advanced Options“**.



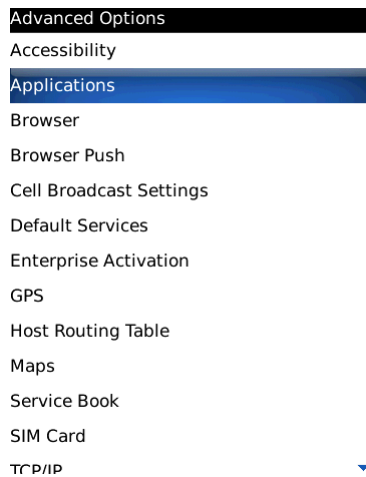
3. Open the menu **"TCP"** to configure the data connection to the internet.



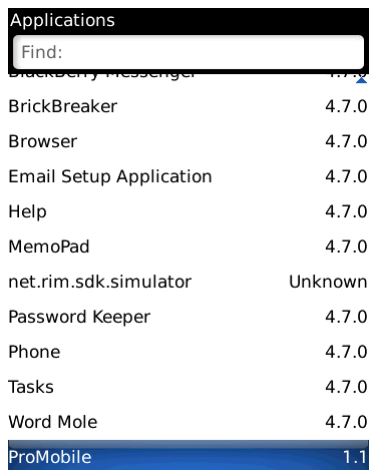
4. Enter your GSM provider's internet node under APN. The correct entry for APN is delivered by your GSM provider.



5. Click "**Escape**" and save the settings.
6. To check the ProDictate mobile settings, click "**Applications**".

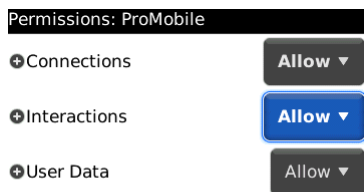


7. Open the application „ProDictate mobile“.



Applications	
BlackBerry Messenger	1.1.2
BrickBreaker	4.7.0
Browser	4.7.0
Email Setup Application	4.7.0
Help	4.7.0
MemoPad	4.7.0
net.rim.sdk.simulator	Unknown
Password Keeper	4.7.0
Phone	4.7.0
Tasks	4.7.0
Word Mole	4.7.0
<b>ProMobile</b>	<b>1.1</b>

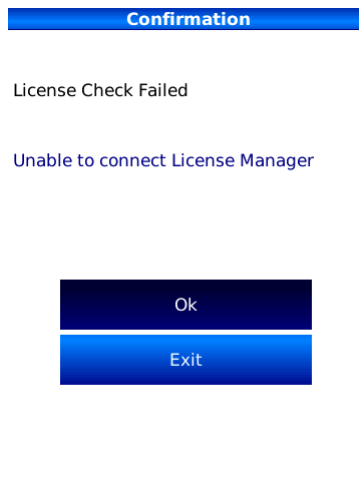
8. Click „**Edit Permissions**“.
9. Click „**Allow**“ to ensure a faultless functioning of ProDictate mobile.



10. Confirm your settings with „**OK**“.

## 8. FAQ

After the testing phase, the software is activated by purchase of a "full version" and entering the activation code. In case of a network failure or a disconnection of the BlackBerry from the license server, a licensing will be not possible. The same is true in the case that the license server or the network is not available or that the user is under way and has no network access.



1. In this case, check first if you can open an internet page with the BlackBerry's browser. If it is not possible to connect to the internet, ask your administrator for further advice.
2. Should it be possible to open an internet page with the browser, enter following link:  
<https://www.mybrainworks.eu/>  
If this web site is not opened, the BES server policies have to be checked. These can be adjusted by the administrator with respect to the communication with SSL certificates.
3. Depending on your purchased tariff at your carrier, the communication will be realized only by the defined service. If a Direct TCP connection is used, an APN node has to be defined. You can find more information in the chapter "Phone Settings".
4. Please visit FAQ at our website: <http://www.mybrainworks.eu/en/faq/27>

## 9. Support

In this paragraph you learn how to get more information and how to contact Brainworks GmbH.

The ProDictate mobile documentation consists of online documentation in PDF format, informations concerning known problems and an application manual.

We strongly recommend you to read the files "Readme.txt" or "Readme.htm" on the product CD before you start using ProDictate mobile. These files contain important informations, such as document updates and corrections.

Address and Contact:

Brainworks GmbH  
Meiereifeld 2b  
D-14532 Kleinmachnow

Tel: 0800 5454509  
Internet: [www.brainworks-gmbh.de](http://www.brainworks-gmbh.de)  
E-Mail: [info@brainworks-gmbh.de](mailto:info@brainworks-gmbh.de)

## 10. Index

<b>A</b>		<b>F</b>	
Access Point .....	32	FAQ.....	32
activate the license .....	25	Fast forward .....	47
activation .....	25	file name .....	35
additional expenses .....	14	<b>G</b>	
address book.....	19	GSM provider's.....	56
Advanced Options.....	55	<b>H</b>	
AES.....	36, 41	HTTP.....	22
alphanumeric .....	34	<b>I</b>	
APN .....	22, 56, 58	import .....	39
APN Service.....	32	insert .....	48
audio .....	35	internet .....	13
audio files .....	16	internet connection .....	17
<b>B</b>		IP address .....	23
BES.....	22, 32, 58	<b>J</b>	
BIS .....	32	Java .....	6
BlackBerry .....	22	<b>K</b>	
BlackBerry Enterprise Service .....	32	keyboard layout .....	17, 47
BlackBerry Internet Service .....	32	<b>L</b>	
Body .....	22	language .....	17
<b>C</b>		License.....	25
capacity .....	17	license activation.....	13
Citrix .....	3	license code.....	6
CLDC 1.1.....	6	license key.....	25
Colour .....	45	License Manager .....	26
connectivity services .....	22	log settings.....	28
costs .....	17	login service .....	43
crash .....	52	Loglevel.....	28
<b>D</b>		<b>M</b>	
DES .....	36, 41	Main menu .....	46
Desktop Manager.....	10	marking mode .....	49
dictation list.....	50	marks.....	48
dictation transfer .....	19	memory card .....	17
digits .....	34	memory requirement.....	31
Direct TCP.....	58	memory size .....	28
directory .....	16	meta data .....	33, 46
Direkt TCP.....	32	Microsoft, Windows .....	3
DNS.....	23	MIDP 2.0 .....	6
<b>E</b>		M-Modus start.....	47
E-field .....	43		
e-fields.....	33		
E-Fields.....	22		
email .....	16		
email account .....	18		
email configuration .....	18		
email recipient.....	18		
encrypted.....	36		
encryption.....	40		
error log.....	28		

<b>N</b>		<b>S</b>	
name .....	35	Save dictation .....	47
New Job .....	46	security verification .....	12
<b>O</b>		Send dictation .....	47
OpenSSL .....	36	sender .....	19
<b>P</b>		SMTP .....	18, 22, 23
password .....	29	sound volume .....	47
Password Settings .....	29	SSL .....	36
Permissions .....	53	SSL key .....	38, 39
phone memory .....	17	SSL key .....	36
Play back .....	47	Start recording .....	47
played back .....	49	successful verification .....	26
prmbx .....	36	synchronization .....	42, 43
ProDictate .....	22, 23	<b>T</b>	
ProPlayer .....	36	terms .....	13
<b>Q</b>		traffic .....	22
QWERTY .....	17	transcriptionist .....	35
<b>R</b>		transmission .....	32, 50
recipient .....	19, 49	<b>U</b>	
Record .....	47	USB cable .....	10
recording .....	49	<b>V</b>	
recovery .....	52	verify the license .....	25
remote configuration .....	42	<b>W</b>	
requirements .....	6	Web Desktop Manager .....	10
Rewind .....	47	WLAN .....	32