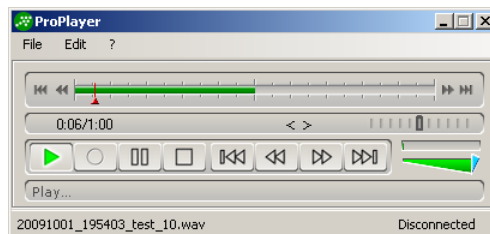


## User Guide ProPlayer

Version : 2.3  
Date : 2010.01.04

Brainworks GmbH  
Workflow Solutions  
Meiereifeld 2b  
D-14532 Kleinmachnow

Internet: [www.brainworks-gmbh.de](http://www.brainworks-gmbh.de)  
E-Mail: [info@brainworks-gmbh.de](mailto:info@brainworks-gmbh.de)



**Please note that due to warranty issues, installation and maintenance of Brainworks product systems are to be performed by specially trained service personnel only.**

The Brainworks team makes quite an effort to supply its customers with electronic documentations for all Brainworks products. If you have remarks or suggestions concerning our product documentation, please send us an email: [info@brainworks-gmbh.de](mailto:info@brainworks-gmbh.de)

Installation Instruction for ProPlayer  
Version: December 2006

Brainworks GmbH  
Meiereifeld 2b  
14532 Kleinmachnow  
[www.brainworks-gmbh.de](http://www.brainworks-gmbh.de)

All rights reserved. Copying, reproducing and distributing the software and this manual without written consent of the Brainworks GmbH are prohibited.

## Trademarks

Microsoft, Windows, XP, Vista, Windows 2000 Server, Windows 2003 Server, SQL2000, SQL2005 Express, Internet Explorer, .NET Framework 1.1/2.0 und DirectX 9.0c are registered trademarks or trademarks of the Microsoft Corporation in the USA and in other countries.

Citrix<sup>®</sup> is registered trademarks or trademarks of Citrix<sup>®</sup> Systems, Inc. in the USA and in other countries.

Dragon NaturallySpeaking<sup>®</sup> is registered trademarks or trademarks of Nuance Communications, in the USA and in other countries.

## LIMITED WARRANTY - LIMITATION OF LIABILITY

PLEASE READ AND ACCEPT THE END USER LICENSE AGREEMENT WHICH IS DELIVERED WITH THE PRODUCT BEFORE YOU USE THE RESPECTIVE SOFTWARE. BY USING AN ARBITRARY PART OF THE SOFTWARE, YOU ACCEPT THE CONDITIONS OF THE END USER LICENSE AGREEMENT.

EXCEPT AS PROVIDED IN THE DISCLAIMER OF WARRANTY, PROPLAYER IS PROVIDED TO THE LICENSEE ON AN "AS IS" BASIS, AND BRAINWORKS GMBH MAKES NO OTHER WARRANTY OF ANY KIND, EXPRESS OR IMPLIED, WITH REGARD TO PROPLAYER. IN NO EVENT SHALL BRAINWORKS GMBH BE LIABLE TO THE LICENSEE FOR ANY SPECIAL, CONSEQUENTIAL, INCIDENTAL OR INDIRECT DAMAGES OF ANY KIND, INCLUDING WITHOUT LIMITATION LOSS OF PROFITS OR DATA AND PERSONAL INJURY ARISING OUT OF OR IN CONNECTION WITH THE INSTALLATION, USE AND PERFORMANCE OF PROPLAYER, WHETHER ALONE OR IN COMBINATION WITH ANY OTHER PRODUCT OR SERVICE. IT IS THE RESPONSIBILITY OF THE LICENSEE TO MAKE BACKUPS AND TAKE OTHER NECESSARY SECURITY MEASURES BEFORE INSTALLING PROPLAYER IN ORDER TO PREVENT POSSIBLE DAMAGE. IN NO EVENT WILL BRAINWORKS GMBH BE LIABLE FOR ANY CLAIM AGAINST THE LICENSEE BY A THIRD PARTY AND THE LICENSEE HEREBY AGREES TO INDEMNIFY AND HOLD BRAINWORKS GMBH HARMLESS FOR ANY CLAIMS FOR COST, DAMAGE, EXPENSE OR LIABILITY ARISING OUT OF OR IN CONNECTION WITH THE INSTALLATION, USE AND PERFORMANCE OF PROPLAYER, WHETHER ALONE OR IN COMBINATION WITH ANY OTHER PRODUCT OR SERVICE.

ALL INFORMATION CONTAINED IN THIS DOCUMENT MAY BE CHANGED BY BRAINWORKS GMBH WITHOUT FURTHER NOTIFICATION. EXCEPT A PRINTED COPY FOR PERSONAL USE, NO PART OF THIS DOCUMENT MAY BE REPRODUCED OR TRANSFERRED ELECTRONICALLY, MECHANICALLY OR IN ANY OTHER WAY FOR ANY PURPOSE WITHOUT WRITTEN AGREEMENT OF THE BRAINWORKS GMBH.

Copyright <sup>©</sup> 2008 Brainworks GmbH. All rights reserved.

## Table of Contents

<b>LIMITED WARRANTY - LIMITATION OF LIABILITY .....</b>	<b>3</b>
<b>INTRODUCTION.....</b>	<b>5</b>
<b>OVERVIEW .....</b>	<b>5</b>
<b>1. HOW TO GET A LICENSE .....</b>	<b>6</b>
<b>2. SOFTWARE REQUIREMENTS.....</b>	<b>6</b>
<b>3. NET FRAMEWORK 2.0: INSTALLATION .....</b>	<b>7</b>
<b>4. DIRECTX 9.0C.....</b>	<b>7</b>
<b>4.1. DIRECTX 9.0C INSTALLATION.....</b>	<b>9</b>
<b>5. PROPLAYER-INSTALLATION .....</b>	<b>12</b>
<b>6. STARTING PROPLAYER .....</b>	<b>15</b>
<b>6.1. PROPLAYER .....</b>	<b>21</b>
<b>6.1.1. PROPLAYER MENU .....</b>	<b>21</b>
<b>6.1.2. OPEN.....</b>	<b>21</b>
<b>6.1.3. CLOSE.....</b>	<b>22</b>
<b>6.1.4. DEMOGRAPHICS.....</b>	<b>22</b>
<b>6.1.5. EXPORT.....</b>	<b>23</b>
<b>6.1.6. SETTINGS .....</b>	<b>23</b>
<b>6.1.7. KEY STORAGE .....</b>	<b>26</b>
<b>6.1.8. LANGUAGE .....</b>	<b>28</b>
<b>6.1.9. QUIT .....</b>	<b>29</b>
<b>6.2. „EDIT“ MENU .....</b>	<b>30</b>
<b>6.3. „?“ MENU .....</b>	<b>31</b>
<b>7. SUPPORT .....</b>	<b>32</b>
<b>8. INDEX .....</b>	<b>33</b>

## Introduction

Brainworks GmbH is manufacturing individual and high-quality dictation software and solutions for dictation management. With our ProPlayer software we provide a large-scale solution which guarantees long-term benefits for our customers.

Brainworks GmbH develops its ProPlayer software exclusively on the .NET platform. This focusing enables us to improve the quality of our solutions significantly and to achieve higher efficiency.

Our solutions are unlimitedly adjustable to the specific needs of a given enterprise and they support any desired end device.

This document describes how the ProPlayer software is installed and configured in order to fulfill a company's individual requirements and policies.

## Overview

In order to use ProPlayer, the .NET framework 2.0 has to be installed on your PC. Should it not be installed already, then please perform a Windows Update with all necessary service packs. Following this, perform a "Custom" update on Microsoft's Windows Update site.

One of ProPlayer's outstanding features is that no USB drivers have to be installed and adjusted on the workstations. USB drivers for the foot pedal are automatically loaded by starting ProPlayer.

## 1. How to get a License

In order to get a license code for ProPlayer, please contact your local distributor. You have to deliver some information to receive a valid license. In most cases you need a license either for an entire domain or for a single PC.

Following information is required for ordering a license:

1. customer ID
2. first name, name / Domain
3. the server's DNS name

## 2. Software Requirements

Several requirements concerning hard- and software must be met for a faultless functioning of ProPlayer. The network connection between server and client workstations should have a band width of at least 100 Mbit. The web browser needs Winsock compatible TCP/IP protocol.

Minimum requirements for a ProPlayer installation on a workstation:

- Intel Pentium 3 processor with 500 MHz or an equivalent processor
- Windows XP with SP2
- 512 MB RAM
- 600 MB free disk space
- DirectX 9.0c
- .NET Framework 2.0 von Microsoft®
- Display resolution / colours: 800 x 600 / 256
- Sound card
- USB port 1.1/2.0
- Email Client

### 3. NET Framework 2.0: Installation

In order to use the ProPlayer web application through Intranet / Internet, it is necessary to make an adjustment of the .NET Framework 2.0 configuration. Should the .NET Framework not be installed on your PC yet, perform a Windows Update with the corresponding Service Packs and choose then the user-defined update.

Download the file from the web server:

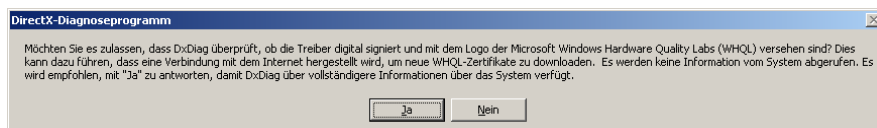
<http://www.microsoft.com/downloads/search.aspx?displaylang=de>

### 4. DirectX 9.0c

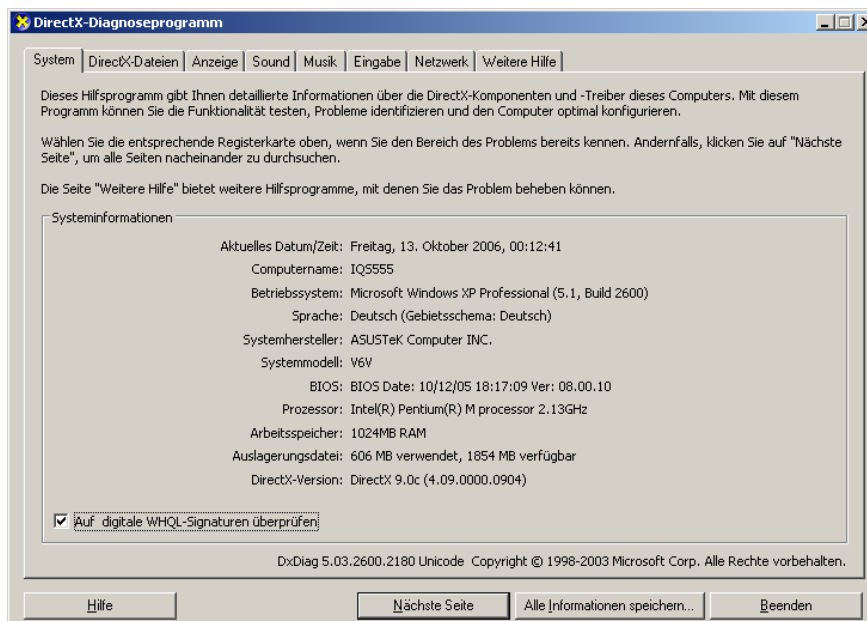
DirectX is a collective term for Microsoft's multimedia technologies integrated in Microsoft operating systems and the Internet Explorer. DirectX has a number of APIs (Application Programming Interfaces), among which "DirectSound" is of crucial importance for the ProPlayer software. DirectSound is responsible for the direct access to sound cards, for recording and play-back of WAV files and for the access to audio devices. Compatibility to already installed device drivers is preserved.

You are able to check, whether and which DirectX version is installed on your PC with a diagnostic tool. Click on **Start**, then on **Run** and then type "**dxdiag**". You can click on the help button of the tool to get information about using the tool.

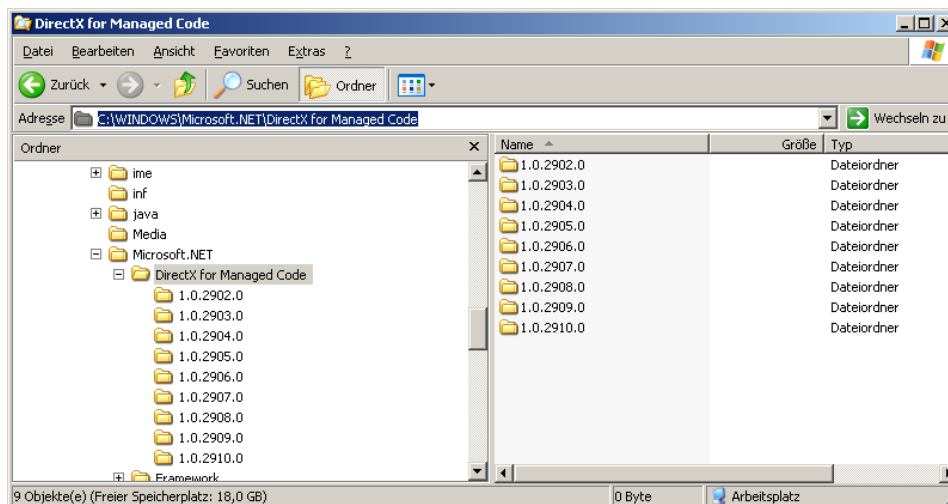
1. Click on "**Yes**".



2. At the bottom of the "**System**" tab you can see the DirectX version. It must be version 5.03.26000.2180.



3. Check whether DirectX directories with DirectX files exist on your PC.
4. Open in Windows Explorer the directory "C:\Windows\Microsoft.NET\DirectX for Managed Code".



5. The "DirectX for Managed Code" directory contains several DirectX subdirectories.
6. If there are no subdirectories in the "DirectX for Managed Code" directory, you have to reinstall DirectX.

## 4.1. DirectX 9.0c Installation

For multimedia support in the audio recorder, the Microsoft© DirectX 9.0C End-User Runtime (from August 2008 or later) has to be installed on your local PC.

You can download this software from the Microsoft website:

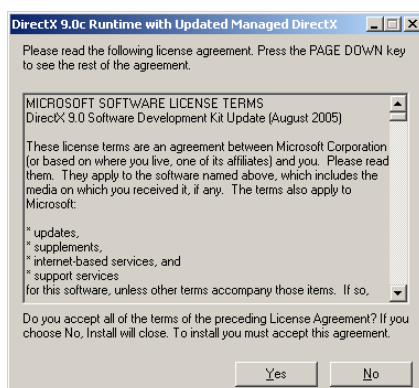
<http://www.microsoft.com/downloads/details.aspx?displaylang=en&FamilyID=04ac064b-00d1-474e-b7b1-442d8712d553>

Quick Details	
File Name:	directx_aug2009_redist.exe
Version:	9.27.1734
Date Published:	9/8/2009
Language:	English
Download Size:	103,3 MB
Estimated Download Time:	Dial-up (56K) 4 hr 12 min

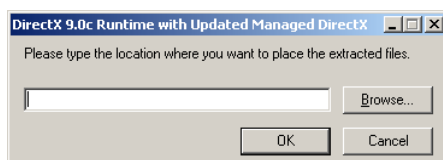
1. When the download is finished, click on the file to execute it.



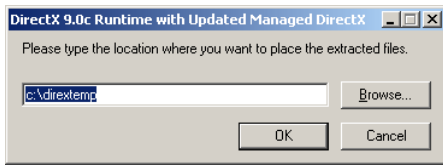
2. Confirm the execution of the file.



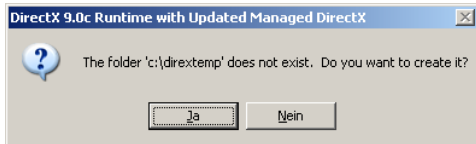
3. Agree with Microsoft´s License Agreement by clicking on „Yes“.



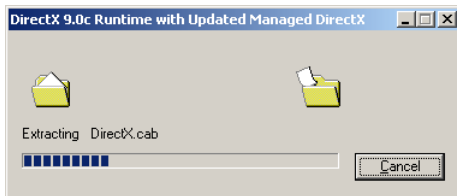
- Define a directory for storing the extracted files.



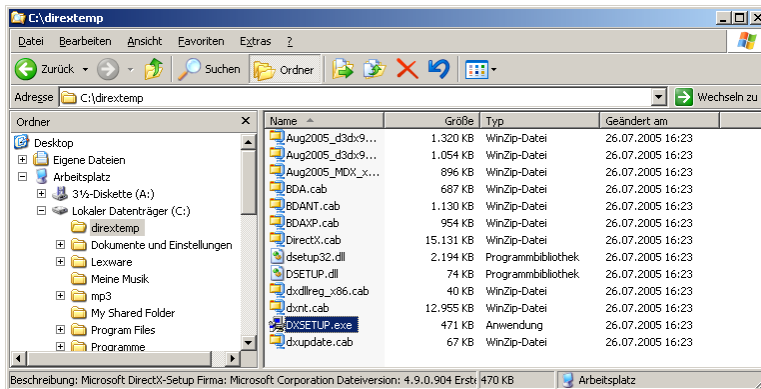
- Type for example "c:\dirextemp".



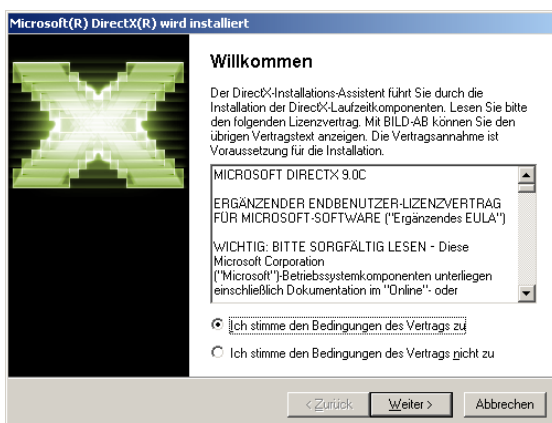
- Confirm the creation of this directory.



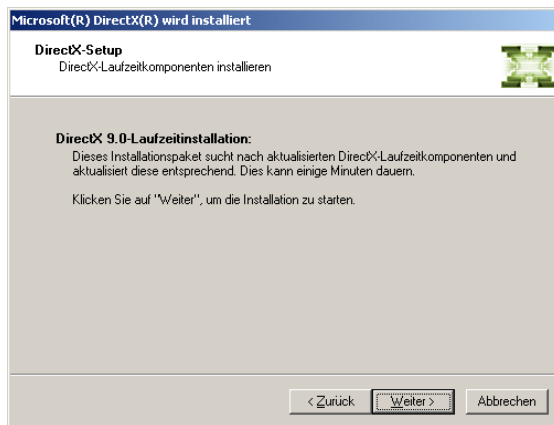
- The files are being extracted.



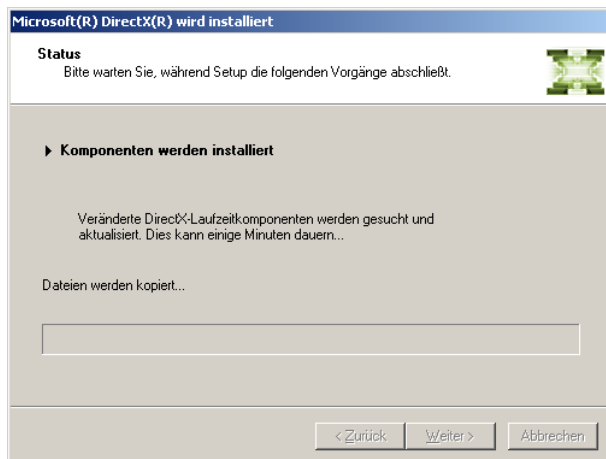
- After all files have been extracted, execute the file "DXSETUP.EXE".



9. Agree with Microsoft's License Agreement and click on "Next".



10. Click on "Next", to start the installation.



11. When the installation has been finished, click on "Finish".

## 5. ProPlayer Installation

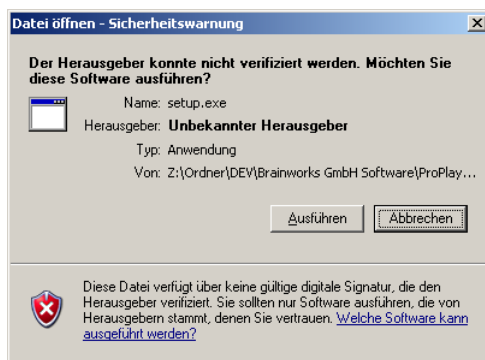
The first step is to transfer all applications onto the PC on which a ProPlayer installation is intended. To this end, unpack the content of the file "ProPlayer.zip" into a folder and then execute the file "Setup.exe". An installation routine will be started which leads you through the installation step-by-step.



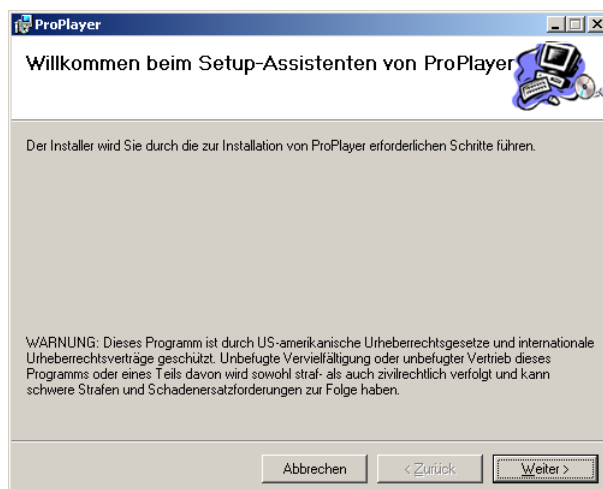
### NOTE!

Should the installation be only partly successful or aborted with an error, check whether all necessary Windows updates have been installed on your PC.

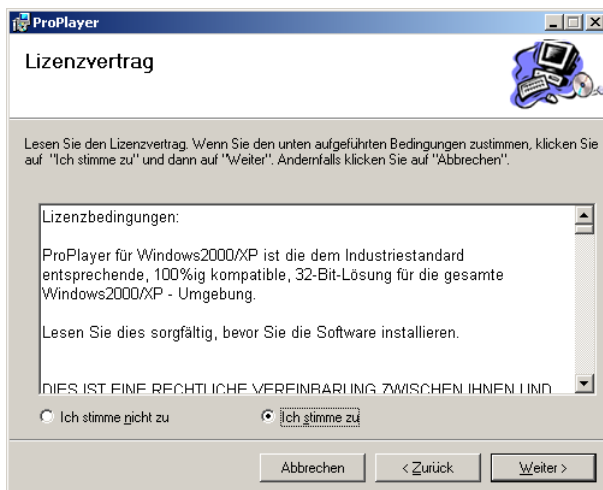
1. Execute the file by a double-click.



2. Confirm the execution of the file.



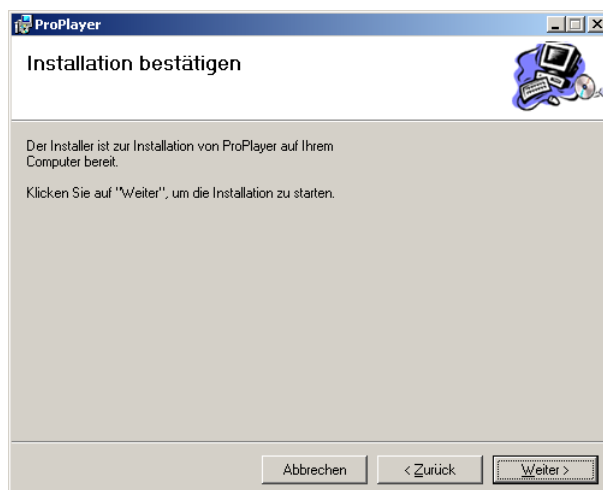
3. Confirm by clicking "**Continue**".



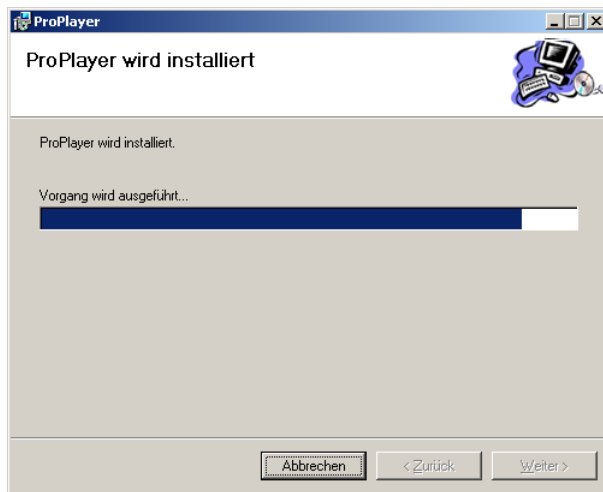
4. Confirm your accordance with ProPlayer's license agreement and click "**Continue**".



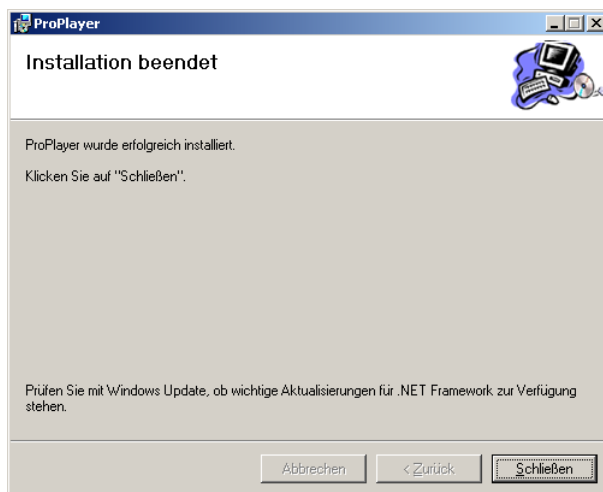
5. Choose an installation folder.



6. Click "**Continue**" to start the installation.



7. The installation has been started.



8. To finish the installation, click "**Close**".
9. A link will be created on the desktop, by which the application can be launched.

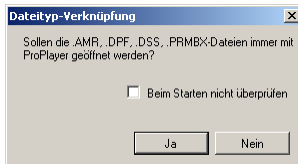


10. After the successful installation, you can delete the folder containing the unpacked files.

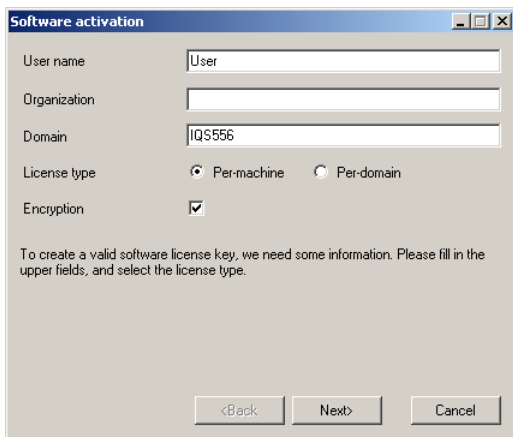
## 6. Starting ProPlayer

To install and use ProPlayer, you need a valid license which you can obtain from your distributor.

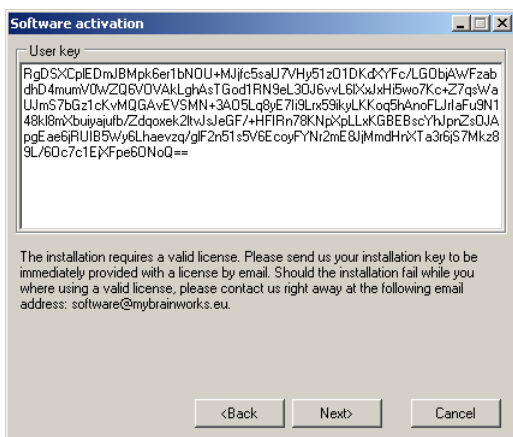
1. At its launch, ProPlayer checks the links.



2. Click **"Yes"** to create the link.
3. At the very first launch, a software activation wizard appears.

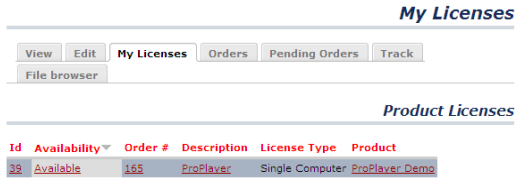


4. Choose the license type and click **"Next"**.

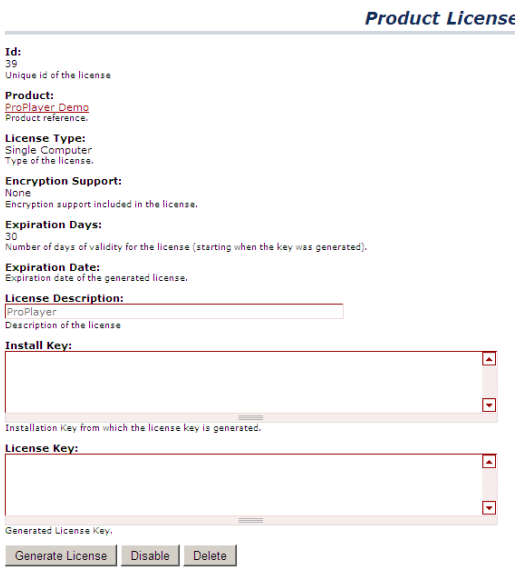


5. An installation code appears in the license window.
6. Please register in the web shop at <http://www.mybrainworks.eu/en>
7. Should you have no account yet, please create a new account at <https://www.mybrainworks.eu/en/user/register>. Fill in the form with all necessary information, then click **"Register"**.
8. Log in into the web shop with your user name and password and purchase a ProPlayer license at <https://www.mybrainworks.eu/en/catalog/18>.

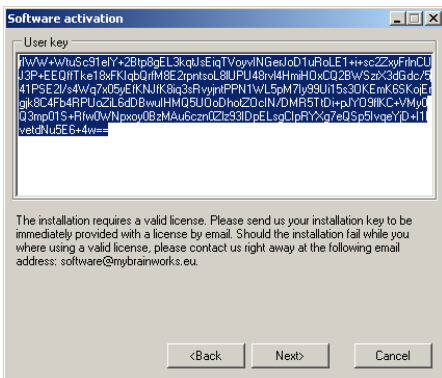
9. After having purchased a license, you will receive a confirmation by email.
10. After having purchased a ProPlayer license, go to [https://www.mybrainworks.eu/en/my\\_licenses](https://www.mybrainworks.eu/en/my_licenses)



11. Available licenses are marked as **"Available"**. Click on the license you have just bought.



12. Copy the content from the ProPlayer Wizard.



13. Paste the key from ProPlayer in the web shop into the field "Install Key".

**Product License**

**Id:**  
39  
Unique id of the license

**Product:**  
[ProPlayer\\_Demo](#)  
Product reference.

**License Type:**  
Single, Computer  
Type of the license.

**Encryption Support:**  
None  
Encryption support included in the license.

**Expiration Days:**  
30  
Number of days of validity for the license (starting when the key was generated).

**Expiration Date:**  
Expiration date of the generated license.

**License Description:**  
ProPlayer  
Description of the license

**Install Key:**  
RgDSXCPeDMjBmPk6er1bNOU+MjJfcSsau7VHy51z01DKdXYFc/LGObJAWFzabdhD4mumV0  
WZQsVCvAlqgAsTGod1RN9eL3OJ8vvl61Xx2xH5wo7Kc+Z7qstWauJms7bGz1cKvMqGAVE  
VGSMM+3A0dSLdyE719LrxS8kyvLkKoo5hAnoFLJrdafu9w148k8mxbuyajuf0ZZdooek2lvJ5le  
GF/+HFIRn78KNpXpLLxKGBE8scYhJpnZsOJApGEE6JRUIBSWY6Lhaevzq/glf2n51sV5EcoyF  
YNr2mE8JjMmdHnXTa3r6j57Mkz89L/6Oc7c1EjXfpe6OnoQ==

Installation Key from which the license key is generated.

**License Key:**

Generated License Key.

14. Click "Generate License" to install the installation key. The "Generate License" process is not reversible.

**Product License**

**Id:**  
39  
Unique id of the license

**Product:**  
[ProPlayer\\_Demo](#)  
Product reference.

**License Type:**  
Single, Computer  
Type of the license.

**Encryption Support:**  
None  
Encryption support included in the license.

**Expiration Days:**  
30  
Number of days of validity for the license (starting when the key was generated).

**Expiration Date:**  
2010-02-06  
Expiration date of the generated license.

**License Description:**  
ProPlayer  
Description of the license

**Install Key:**  
KaIYuj3VfjdY8YaXWaZx85Q0hWyBh1A240iCoD+EZiWpPwPa8Gi9xNkWs14EEJr8mXhvx9E  
W4ueev+mPBbp45B/8vJGB0wqohu1KDvgXyTNQVZ4CkWFmMu+k99Ma1K9CnyA4CrXSMl1  
GsgtEzWfKoroJw5f5H4WP4+XrmG5JGdeHPQV7z+wjGw++wQ5bGF6lRS72Axk1kQ794  
HQu2ElKhxt+9GHyeUcknbnmMjamHzN/4hBF2n2N1q3zcAbEpbBjo3VNsATE3aT1nU99DgubAn  
cZq8ruxMM1GBm8byXB7sg5mEa24stPtd0fM6rD3/roA8TRsXg6Ydgtw==

Installation Key from which the license key is generated.

**License Key:**  
ZGF0ZT0wNjA5MjAxMA0KM37GVtMhFAJEW38CH0jrv9+Qgb2EmnicvsmMHR6D6sFR1BmVa  
woWX1pFdHfi+fS1Lmny/xzA0Szbzq5chvDL5IBG2Fmf3dU3q0y+R5BxYPu7iLJ/ozqx1gga+3b7  
07u8lF9j79m5r/CctJdHBNoochpiv9vXR1Dqy5uQLGzZcljCTJmhHVH36iyfatiTtqge4UoIWdWj  
HW1E1oCg2vWu0YskRSWwDzYQomeF3WJc2VqLzQwWk3dSRu2Zx00g0Dk3jvKkgg/mxFOY  
dMwj/CuIQzLjwBVlX9zqICSjJwBfmxrvjXkKw7PXfMuZzkf4nwAM/xLUtUpVrng0CYAw==

Generated License Key.

15. Copy the license key.

**Product License**

---

**Id:**  
39  
Unique id of the license.

**Product:**  
[ProPlayer Demo](#)  
Product reference.

**License Type:**  
Single\_Computer  
Type of the license.

**Encryption Support:**  
None  
Encryption support included in the license.

**Expiration Days:**  
30  
Number of days of validity for the license (starting when the key was generated).

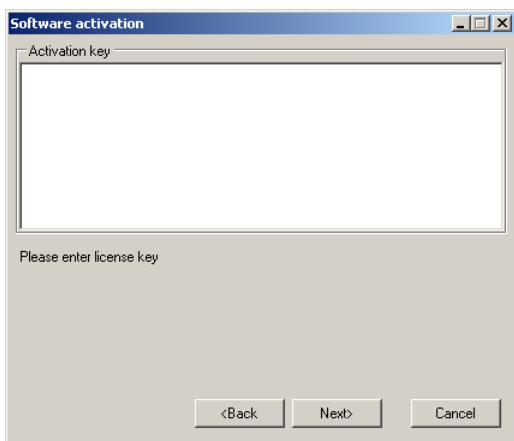
**Expiration Date:**  
2010-02-06  
Expiration date of the generated license.

**License Description:**  
  
Description of the license

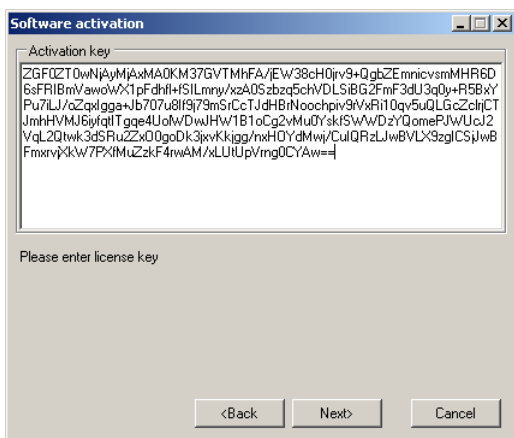
**Install Key:**  
  
Installation key from which the license key is generated.

**License Key:**  
  
Generated License Key.

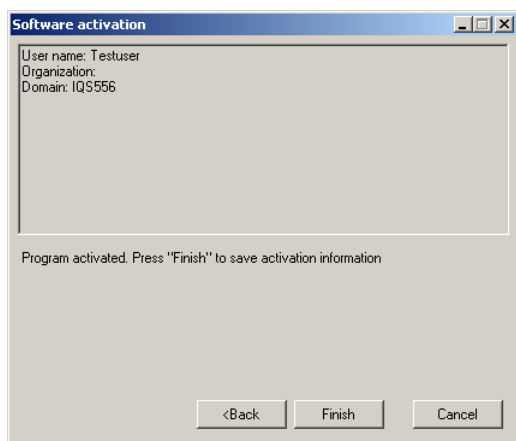
16. Then proceed with ProPlayer's activation.



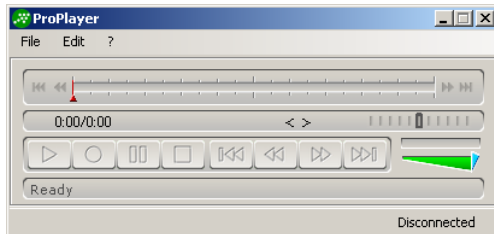
17. Paste the license key into the field in ProPlayer. Then click **"Next"** to proceed with ProPlayer's activation



18. After the license check has been successful, finish the software activation by clicking **"Finish"**.



19. After the licensing procedure, ProPlayer is launched.



A detailed overview about the features of the basic product and available modules can be found on our website:

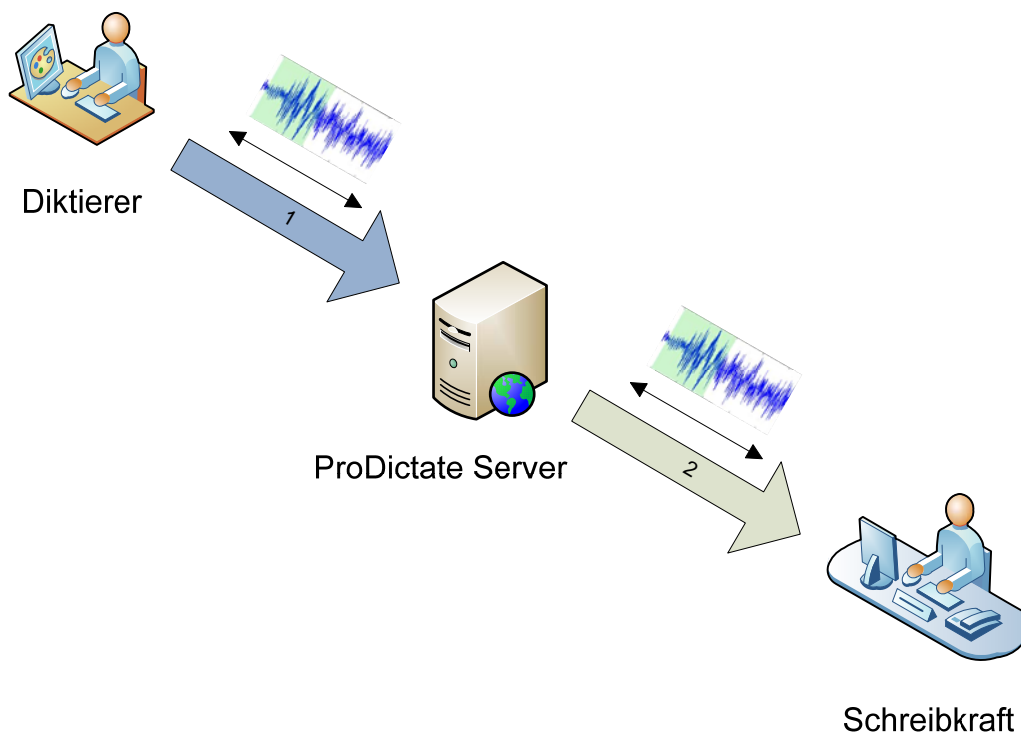
[http://www.mybrainworks.eu/en/en\\_proplayer](http://www.mybrainworks.eu/en/en_proplayer)

#### NOTE!

The registered license code of a given PC cannot be used with or transferred to another PC of the network. You need to purchase further license codes if you wish to enlarge your system.

The audio files, which were created on a dictator's workstation, are sent to the recipient over the network (LAN / WAN). Audio files are transported by email or directly by the web service to the ProDictate digital dictation system.

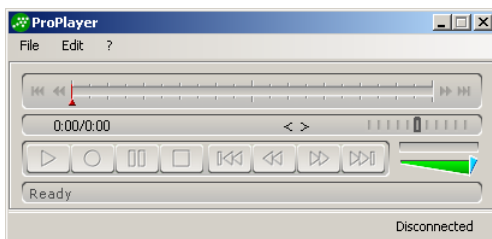
Transcription jobs are managed automatically in the ProDictate [http://www.mybrainworks.eu/en/en\\_prodictate](http://www.mybrainworks.eu/en/en_prodictate) system. In order to accomplish this, a workflow system is developed in cooperation with the customer and the software configured appropriately, so that productive work can be commenced immediately after the installation.



Dictations sent by an email system are transported as attachments. Transcription jobs are assigned at the dictator's workstation by email addresses.

## 6.1. ProPlayer

After clicking on the application "ProPlayer" you are in the main menu. The menu bar gives you quick access to individual commands.

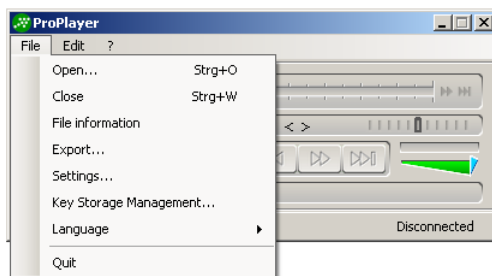


Depending on the respective application, you see commands which are at your disposal in black letters, those which cannot be executed in this menu are greyed out.

### 6.1.1. ProPlayer Menu

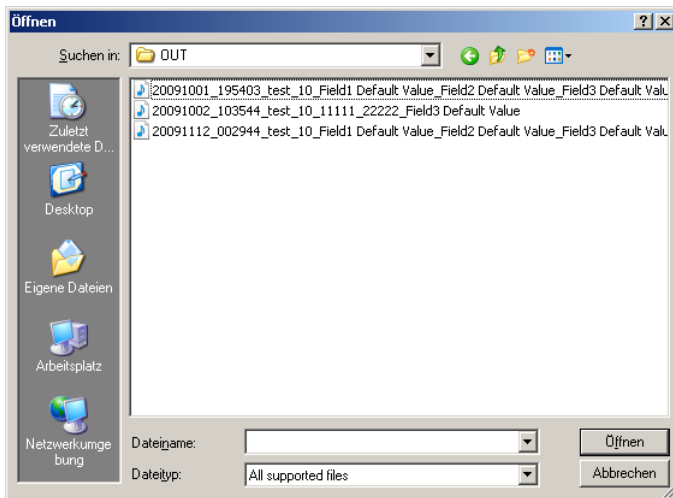
In this section all commands of the "File" menu will be explained. They all have to do with opening and closing audio files and with ProPlayer's settings.

In the figure below, you can see all available commands:

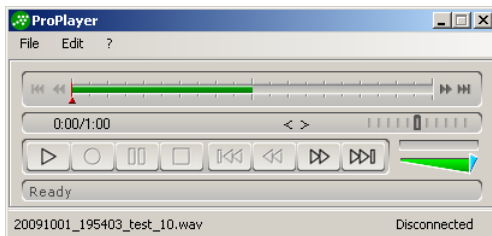


### 6.1.2. Open

Click the menu "File", then "Open" to load a dictation into ProPlayer. A dialogue box enables you to choose the respective file. Dictations can be thus opened and are available for transcription. With "Open" you confirm your choice.



The dictation is loaded and can be listened to in ProPlayer.



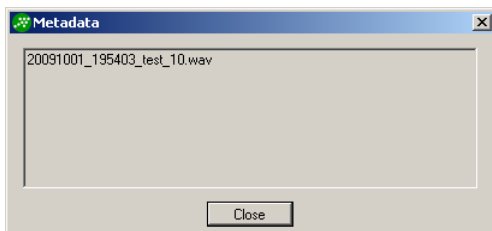
ProPlayer is controlled by the USB foot pedal. The foot pedal's button layout can be configured in the **"Settings"** menu.

### 6.1.3. Close

To close an audio file, click **"File"** in ProPlayer's menu bar, then click **"Close"**.

### 6.1.4. Demographics

Information about a dictation can be shown in another window. Click in the ProPlayer menu bar on **"File"**, then on **"File Information"**.

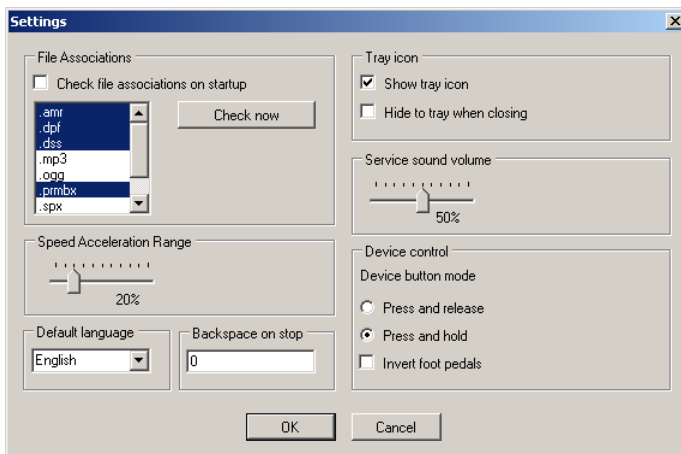


## 6.1.5. Export

Click in the ProPlayer menu bar on **"File"**, then on **„Export“** to save an AMR audio file as a WAV file. The WAV file type fulfills the requirements for processing an audio file in the DragonNaturallySpeaking speech recognition system.

## 6.1.6. Settings

The **"Settings"** menu offers you following options for individual presets:

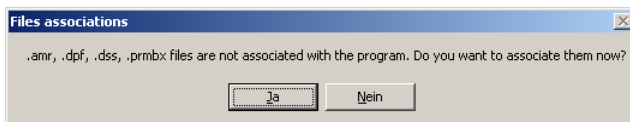


## File Type

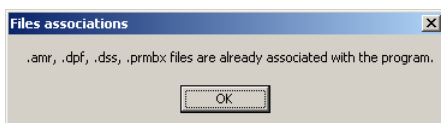
File type extensions are usually assigned to a certain file type and thus to a certain application with which a file is opened.

**„Check file associations on startup“** - ProPlayer will check links at each launch. Should the link chains be not correct, broken or leading to a not-existing file, ProPlayer will create new links at its launch.

**„Check now“**- Checks the status of links to the defined file type extensions and enables you to make changes. Click **“Yes“** to create the link.



ProPlayer analyses the file type extensions and links them with the corresponding file types.



Once the links to the defined file type extensions are created, no further association is necessary.

## Symbol in the Task Bar

In the task bar, near the clock, there is a zone for program icons. The task bar can be used to toggle between running applications.

**"Show tray icon"** - By clicking "Show tray icon" a ProPlayer icon appears in the task bar.

**„Hide to tray when closing“**– At closing ProPlayer, the application remains loaded in the background. To close ProPlayer, click on the icon in the task bar. Click on the menu **"File"** for this purpose, and then click on **"Quit"**.

## Service Sound Volume

Sound volume for a program event is set by **"Service Sound Volume"**. Move the slider to the wanted position. Lower positions create lower sound volumes, higher positions higher sound volumes. Click **"OK"** to activate this option.

## Hardware Settings

ProPlayer is controlled by the USB foot pedal. The button layout for the foot pedal can be adjusted here. Following layout is defined by default:

Left foot button: Rewind  
Middle foot button: Play  
Right foot button: Fast Forward

**"Invert foot pedals"** – The layout can be changed for the left and right button if need be. Click **"Invert foot pedals"** and choose the alternative layout. If you activate **"Invert foot pedals"**, following layout will be activated:

Left foot button: Fast Forward  
Middle foot button: Play  
Right foot button: Rewind

**„Button Mode for Play-Back“** – The foot pedal is set to **"Push and Release"** by default. The play-back can be stopped by releasing the middle button. A continuous play-back is achieved by **"Push and Hold"**. After releasing the middle foot button, the playback will be resumed. By pushing the middle button repeatedly, the play-back stops

## Speed

The winding speed of the audio files can be adjusted by **"Speed"**. Move the slider to the wanted position. Lower positions effect a slower winding speed, higher positions a higher speed.

## Language

The language of the user interface can easily be changed by choosing the option **"Language"**. Click on the language of your choice, then confirm with **"OK"**. Following languages can be chosen in ProPlayer:

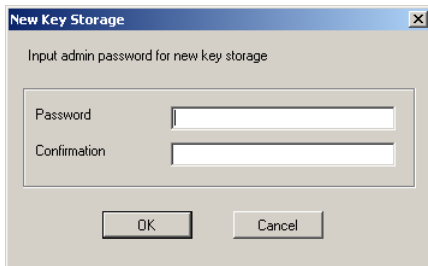
1. English
2. German
3. ...

## Backspace

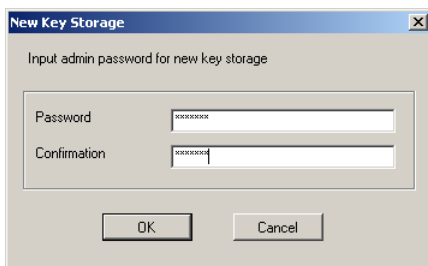
With "**Backspace**" you can adjust the backspace for the audio files. Enter a value in the unit of seconds. By pushing "**Stop**", the audio file then automatically jumps back according to the defined value.

## 6.1.7. Key Storage

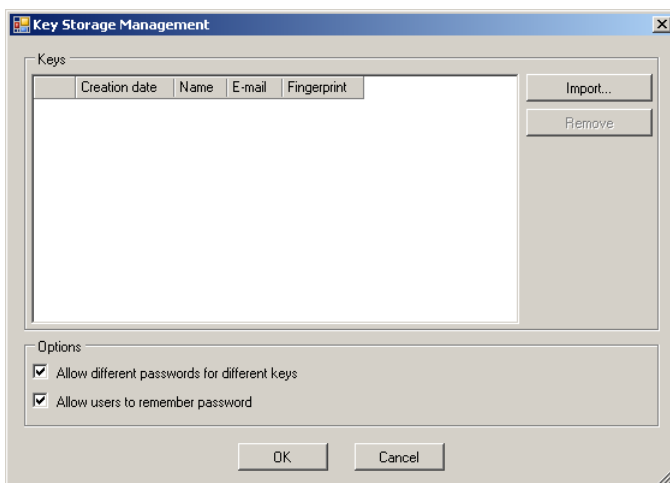
The SSL key storage enables you to store SSL certificates and keys. SSL certificates protect dictations in so far that meta data and audio files are not sent in clear text, provided that an OpenSSL application is installed on the computer. ProPlayer does not offer functionality for requesting, generating and downloading certificates and therefore there will be no explanation of these processes in the following steps. It is assumed that a certificate has already been created and can be used.



1. In the menu "**File**", click "**Key Storage Manager**". You can create a password for the Key Storage Manager in the dialogue box. The password enables you to access the key storage and to import or delete SSL keys. Please keep the password at a safe place, because if it is lost, it cannot be restored. The password should be known by the **Administrator** only, in order to avoid misuse of user data.
2. After you have entered a password, click „**OK**“.

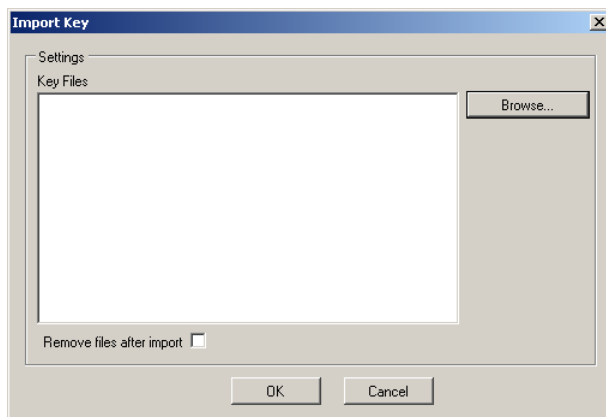


3. Then click „**Import**“.

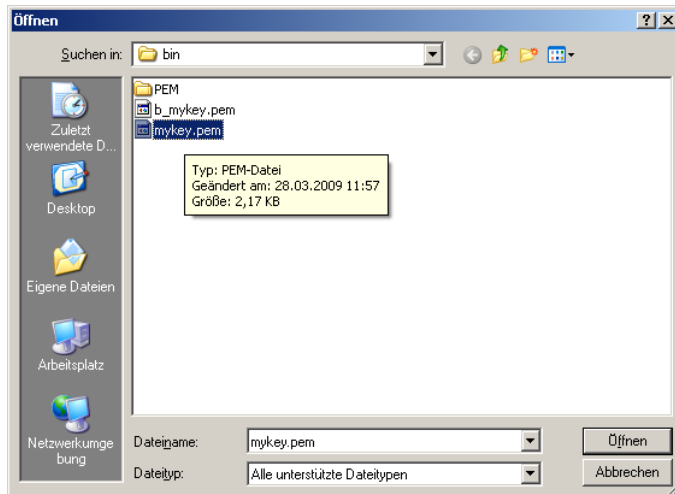


4. By activating "**Allow different passwords for different keys**" you are able to use different passwords for different SSL keys.

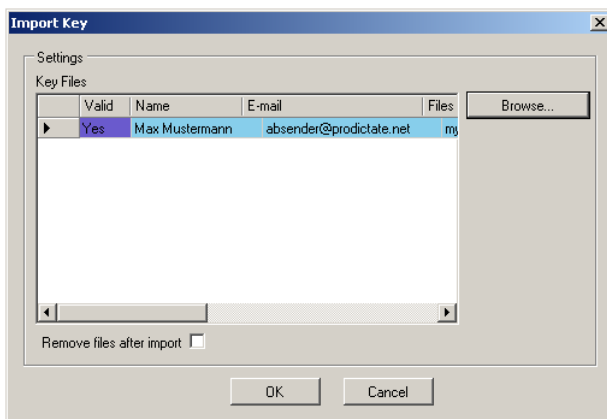
5. With **"Allow users to remember password"** a transcriptionist can listen to encrypted dictations after entering the SSL key password only once, without additional password requests. To this end, ProPlayer has to remain loaded in the background. After closing ProPlayer, the password has to be entered again.
6. Click **"Search"** and open the file containing the SSL key.



7. Choosing the option **"Remove files after import"** deletes the SSL key in the initial file. This option should be chosen when the SSL key is located on the PC and you want it to be deleted.
8. Choose the certificate.

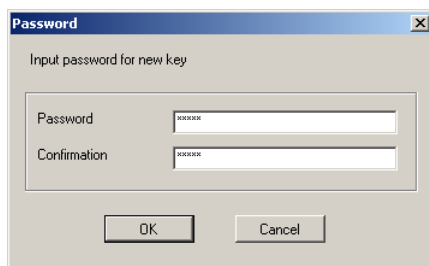


9. Click **"Open"**.

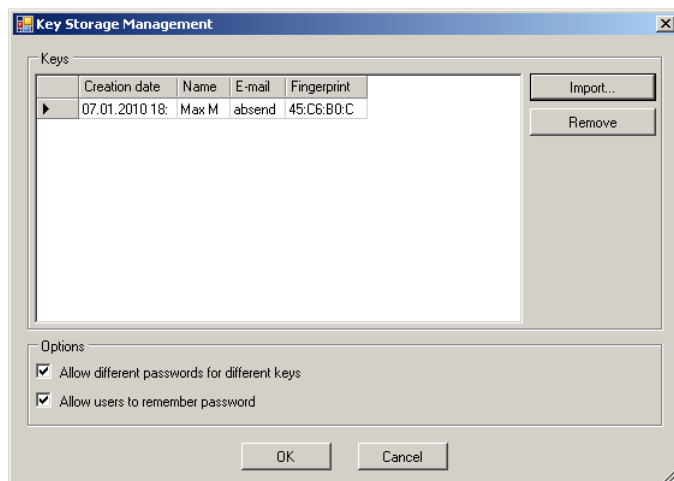


10. Click „**OK**“.

11. Enter a password for the SSL key. This password is needed by the transcriptionist to open the encrypted dictation.



12. Click "**OK**" to finish the input.



## 6.1.8. Language

The language of the user interface can easily be changed by choosing the option "**Language**". Click on the language of your choice, then confirm with "**OK**". Following languages can be chosen in ProPlayer:

1. English
2. German

3. Italian
4. French
5. Spanish
6. ....

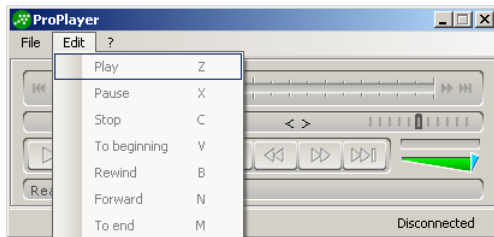
## 6.1.9. Quit

By clicking "**Quit**", you exit the ProPlayer application. If "**Hide to tray when closing**" has been activated, the application will stay loaded in the background.

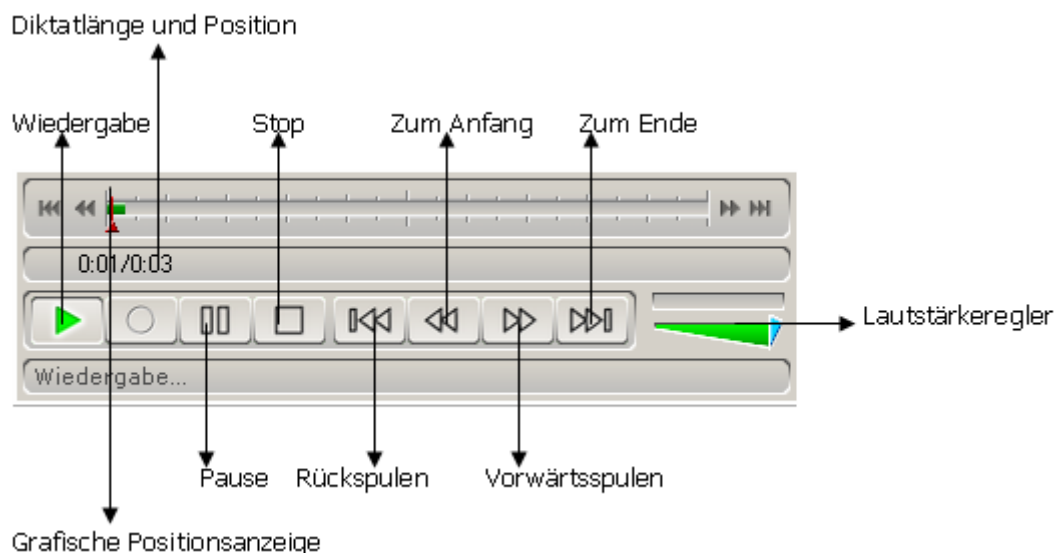
## 6.2. "Edit" Menu

The multimedia recorder is located in ProPlayer's middle section. You have a fast access to all control elements by the foot pedal or the mouse.

As soon as you move the mouse over the control elements, the active buttons are shown: Pause, Play, Stop, Fast Forward, Fast Rewind. Volume settings for play-back can be adjusted effortlessly in the application.

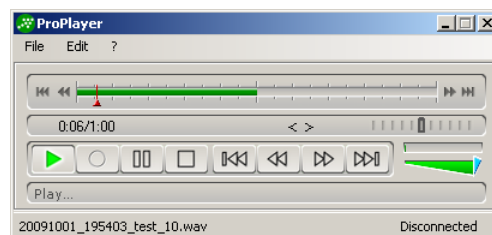


Among others, following functions are available:



### Play

The play-back can only be started when a dictation has been opened in ProPlayer. Choose in the menu "Edit" the option "**Play**". The play-back of the audio file is then started and can be listened to by a connected head set or speakersystem. An ongoing play-back is indicated by the play-back control element, which is then green.



### Pause

Click „Pause" to interrupt the play-back. To resume the play-back, click "Play" again.

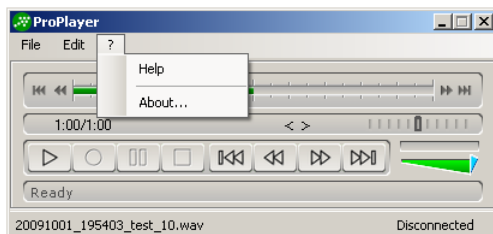
<b>Stop</b>	Click „Stop“ to stop the play-back. If a value for the backspace has been defined, the position will be set back corresponding to that value.
<b>Jump to Beginning</b>	Clicking „Jump to Beginning“ causes a jump to the beginning of the audio file.
<b>Fast Forward</b>	Click the control element "Fast Forward" to achieve this effect.
<b>Rewind</b>	Click the control element „Rewind“ to achieve this effect.
<b>Jump to End</b>	Click the control element „Jump to End“ to achieve this effect.
<b>Volume</b>	With this control element you can adjust the play-back volume.
<b>Play-back Speed</b>	With this feature you can easily adjust the play-back speed of audio files.

Dictation demographics are sent together with the audio-files and can be seen in a separate window at the right side of the recorder. They offer a fast access to dictation data.

If you meet any difficulties concerning the display of ProPlayer's window, please check the .NET framework settings and the DirectX 9.0c installation.

## 6.3. "?" Menu

For further information about ProPlayer, you can click on "?", then click "**Help**". The user manual will appear. Click simply on an item you are interested in to read more about the respective subject.



With the "**About**" button you gain access to system informations. Here you can obtain further information's.

Please notice that recent changes and additions are not contained in this document. The contents of this document are based on the product version(s) which were up-to-date at the time of its editing. Correctness of these information's concerning product versions in other languages has not been verified. The Brainworks GmbH delivers these information's without any warranty concerning correctness and functionality and without any warranty concerning completeness and correctness of the translation.

## 7. Support

In this paragraph you learn how to get more information and how to contact Brainworks GmbH.

The Proplayer documentation consists of online documentation, informations concerning known problems and an application manual. The online documentation is available at [www.mybrainworks.eu/en/faq](http://www.mybrainworks.eu/en/faq).

You should read the files "Readme.txt" or "Readme.htm" on the product CD before you start using ProPlayer. These files contain important informations, such as document updates and corrections.

Address:

Brainworks GmbH  
Meiereifeld 2b  
D-14532 Kleinmachnow

Tel: 0800 5454509  
Internet: [www.brainworks-gmbh.de](http://www.brainworks-gmbh.de)  
E-Mail: [info@brainworks-gmbh.de](mailto:info@brainworks-gmbh.de)

## 8. Index

.NET Framework 2.0 .....	7		
<b>A</b>			
activation wizard.....	15		
AMR.....	23		
association .....	23		
attachments .....	21		
audio .....	25		
Audio .....	20		
<b>B</b>			
Backspace .....	25		
<b>C</b>			
certificates .....	26		
Citrix.....	3		
commands .....	21		
<b>D</b>			
demographics.....	31		
<b>Demographics</b> .....	22		
DirectX.....	7, 8		
DirectX 9.0C End-User Runtime .....	9		
DirectX for Managed Code.....	8		
DragonNaturallySpeaking .....	23		
dxdiag.....	7		
DXSETUP.EXE.....	10		
<b>E</b>			
email .....	20		
email addresses.....	21		
encrypted dictation .....	28		
Export.....	23		
extensions.....	23		
<b>F</b>			
Fast Forward .....	24, 31		
Fast Rewind .....	30		
File Information .....	22		
File type extensions .....	23		
foot pedal .....	24		
Forward .....	30		
<b>H</b>			
Hardware Settings .....	24		
			<b>I</b>
		icons .....	24
		installation folder .....	13
		installation routine .....	12
		<b>J</b>	
		Jump to Beginning .....	31
		Jump to End .....	31
		<b>K</b>	
		keys .....	26
		<b>L</b>	
		language .....	24, 28
		license.....	20
		License Agreement.....	9
		license code.....	6
		links .....	23
		<b>M</b>	
		Microsoft, Windows .....	3
		Minimum requirements.....	6
		<b>O</b>	
		Open .....	21
		OpenSSL .....	26
		ordering a license.....	6
		<b>P</b>	
		password.....	26, 28
		Pause.....	30
		Play.....	24, 30
		play-back speed.....	31
		presettings .....	23
		Push and Hold .....	24
		Push and Release.....	24
		<b>Q</b>	
		Quit.....	29
		<b>R</b>	
		requirements .....	6
		Rewind.....	24, 31
		<b>S</b>	
		Service Sound Volume.....	24
		settings .....	21

Settings .....	22
slider .....	24
Sound Volume .....	24
Speed .....	24
SSL certificates .....	26
SSL key password.....	27
SSL key storage.....	26
SSL keys .....	26
Stop.....	30, 31
system information's .....	31

**T**

task bar .....	24
Transcription jobs .....	21

**U**

USB foot pedal.....	22
---------------------	----

**V**

valid license .....	15
volume.....	31

**W**

WAV file .....	23
----------------	----